



2013

Student

Design

Awards

RSA Student Design Awards Winners

2012/13. Celebrating of 89 years of student designers, sponsors and supporters of the RSA Student Design Awards.

STUDENT
RSA **DESIGN**
AWARDS

[@RSADesignAwards](https://twitter.com/RSADesignAwards)
[#theRSA](https://twitter.com/RSADesignAwards)

Workplace 2030

Creating the workplace for future generations



Shonagh Gardiner, University of Dundee

Consult + Design: a space for collaboration between design, community and business



Improve Water Environments

Reduce water pollution and restore nature river features



Charles Anderson, Kingston University

Dump in Polystyrene: a solution for breaking down and recycling used and dirty polystyrene

5% Raw Polystyrene
95% Air



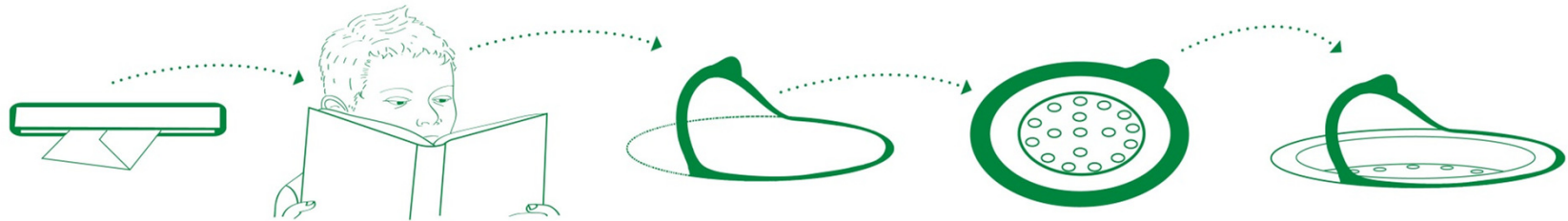
Raw Polystyrene



95% of Expanded Polystyrene is air.
Reducing Polystyrene to its raw state
only occupies 5% of the original volume.
This would enable an easier handling,
transport and recycling process.

Amelia Hurren, Middlesex University

Keep it neutral: a campaign to help people better understand what they put into the water environment



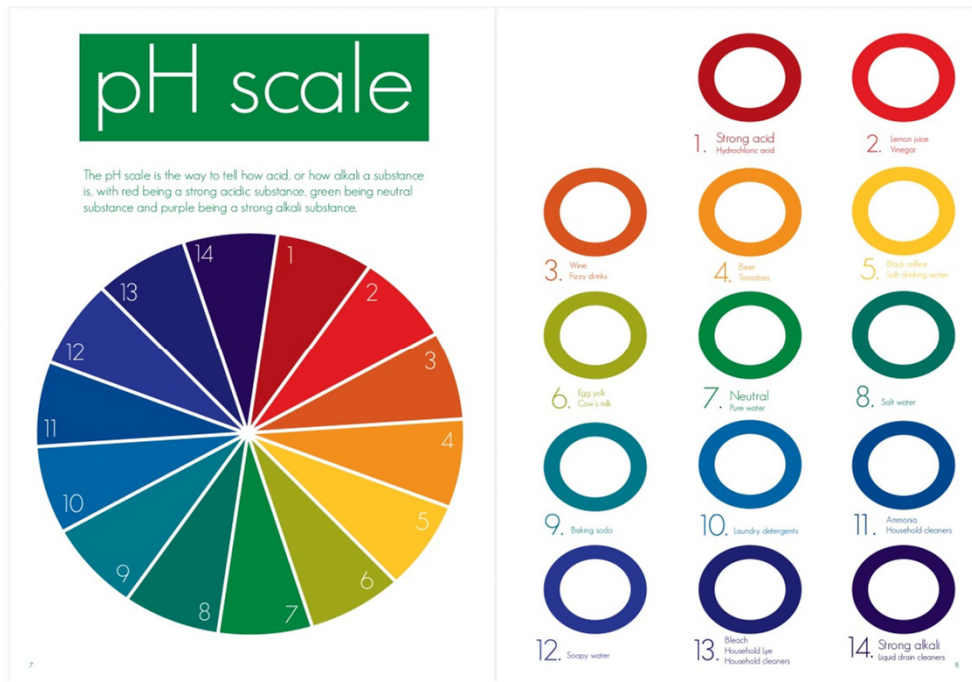
People receive the information booklet and the rings through the post

People read the information booklet

Take the ring out of the booklet

Place the ring around the sink

Remove the protective layer from the ring



Valuing Water

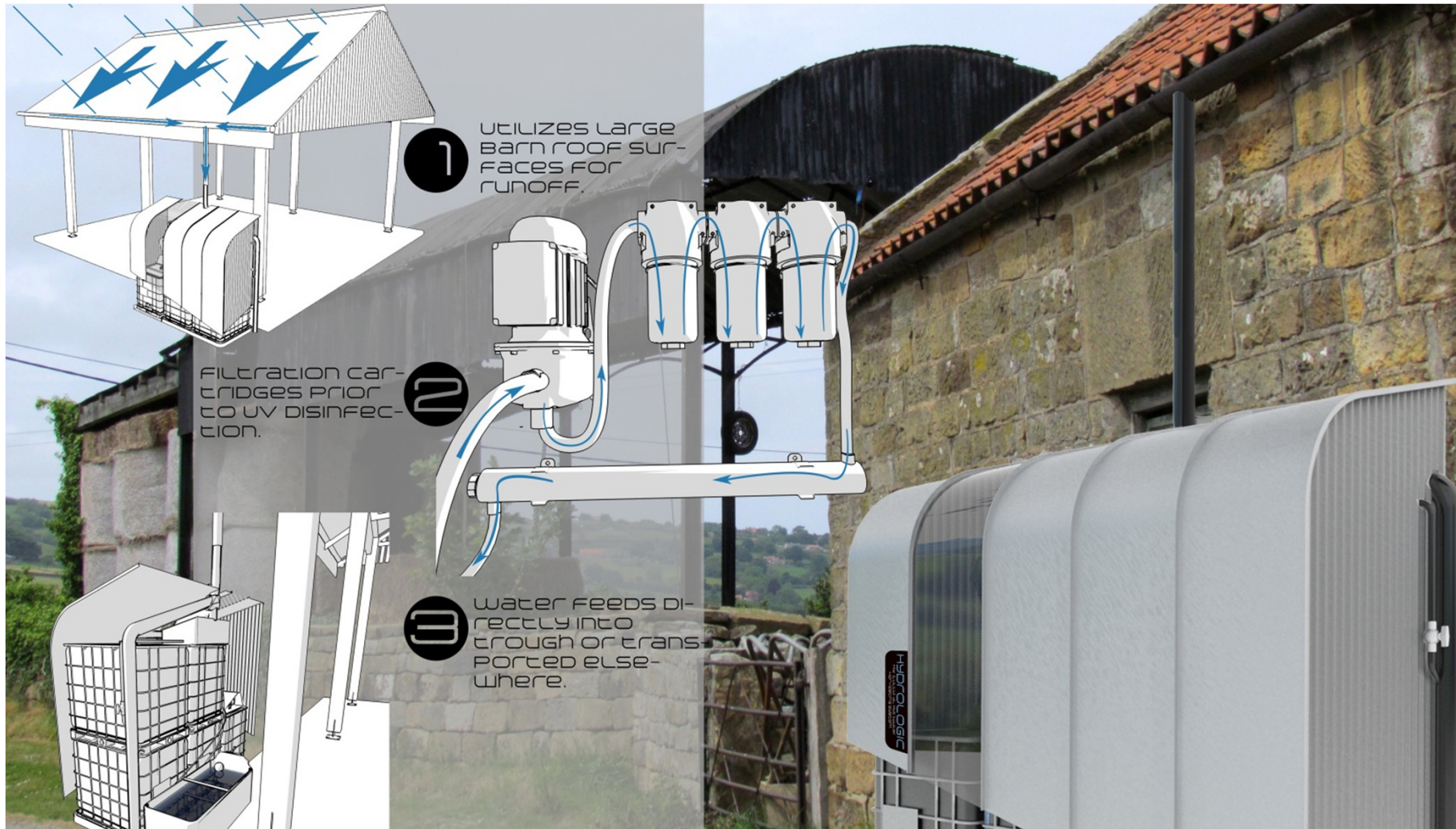
Use design to help people understand the value of water



YorkshireWater

Joel Knox, University of Nottingham

Hydrologic Rainwater Harvesting: system for purifying rainwater for livestock



Ryan Sanderson, Northumbria University

Trial Water Meter: An easy-to-use, no-risk device that lets people trial a water meter in their home



Circular City

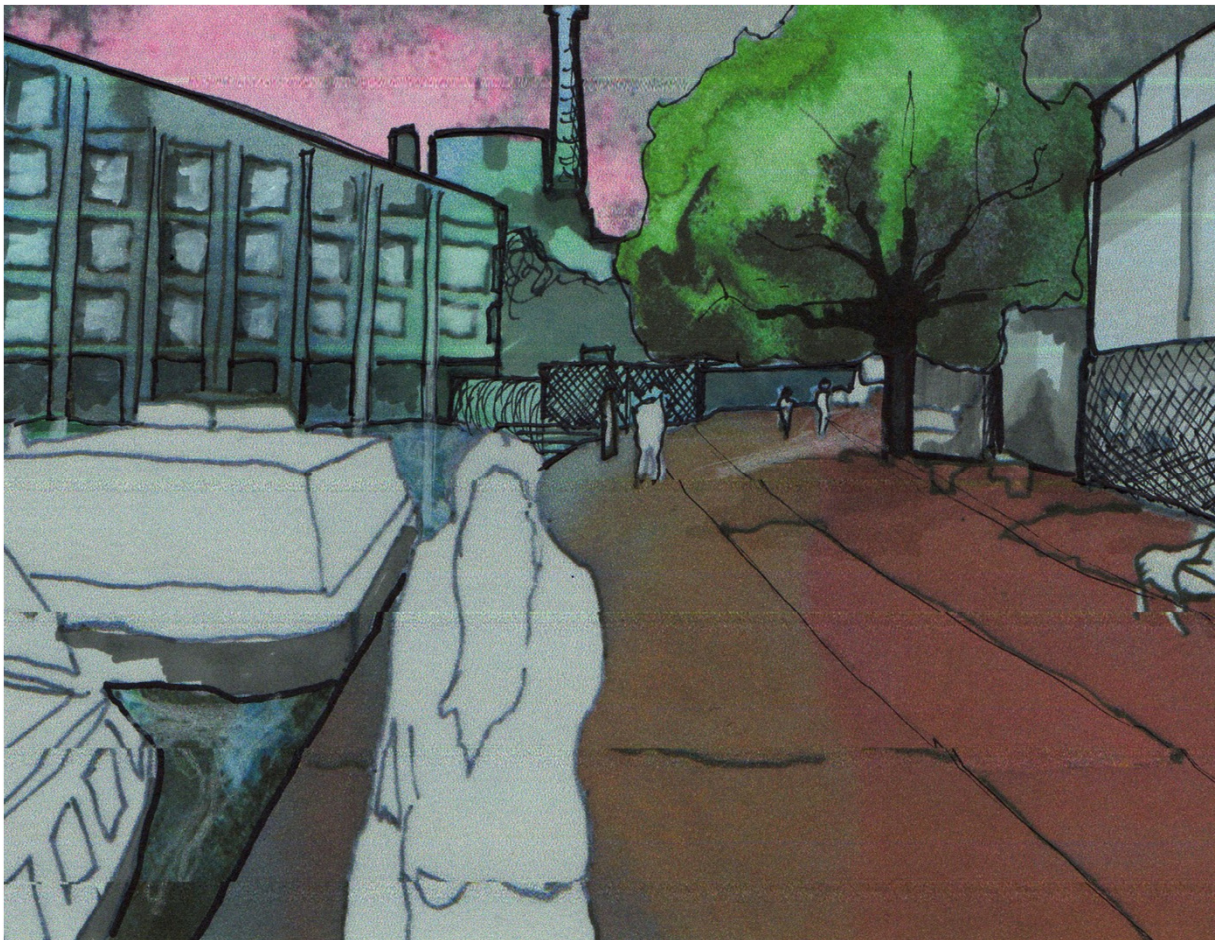
**Design the built environment for flexibility and
towards zero waste**

supported by

The Patricia Tindale Legacy

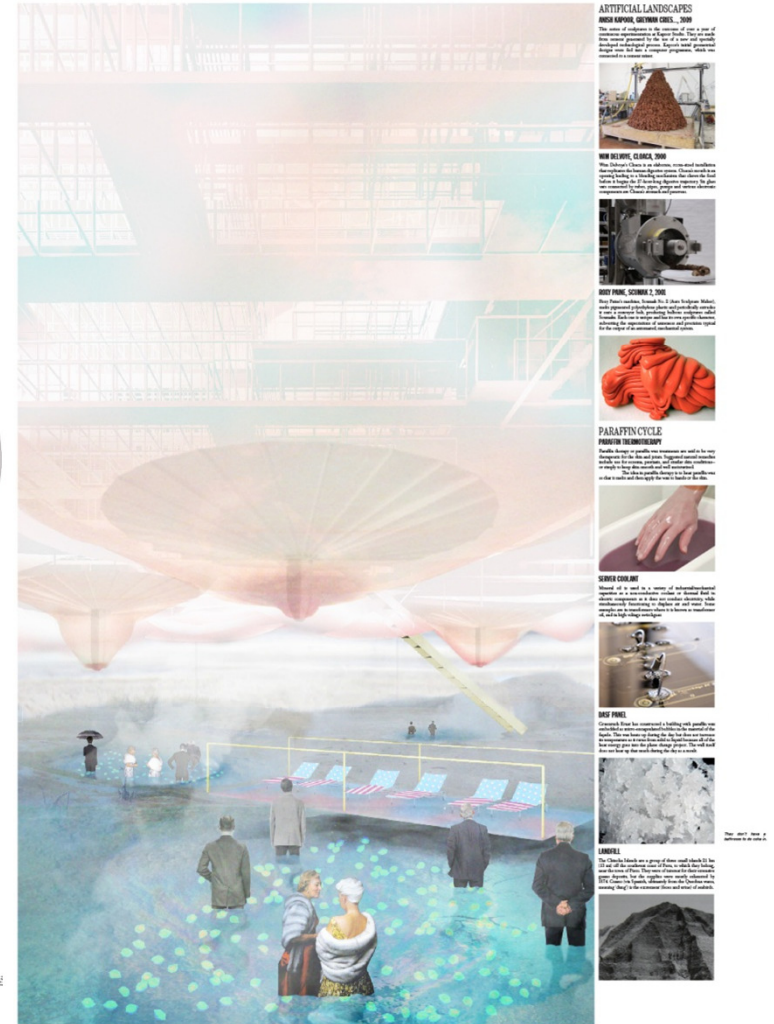
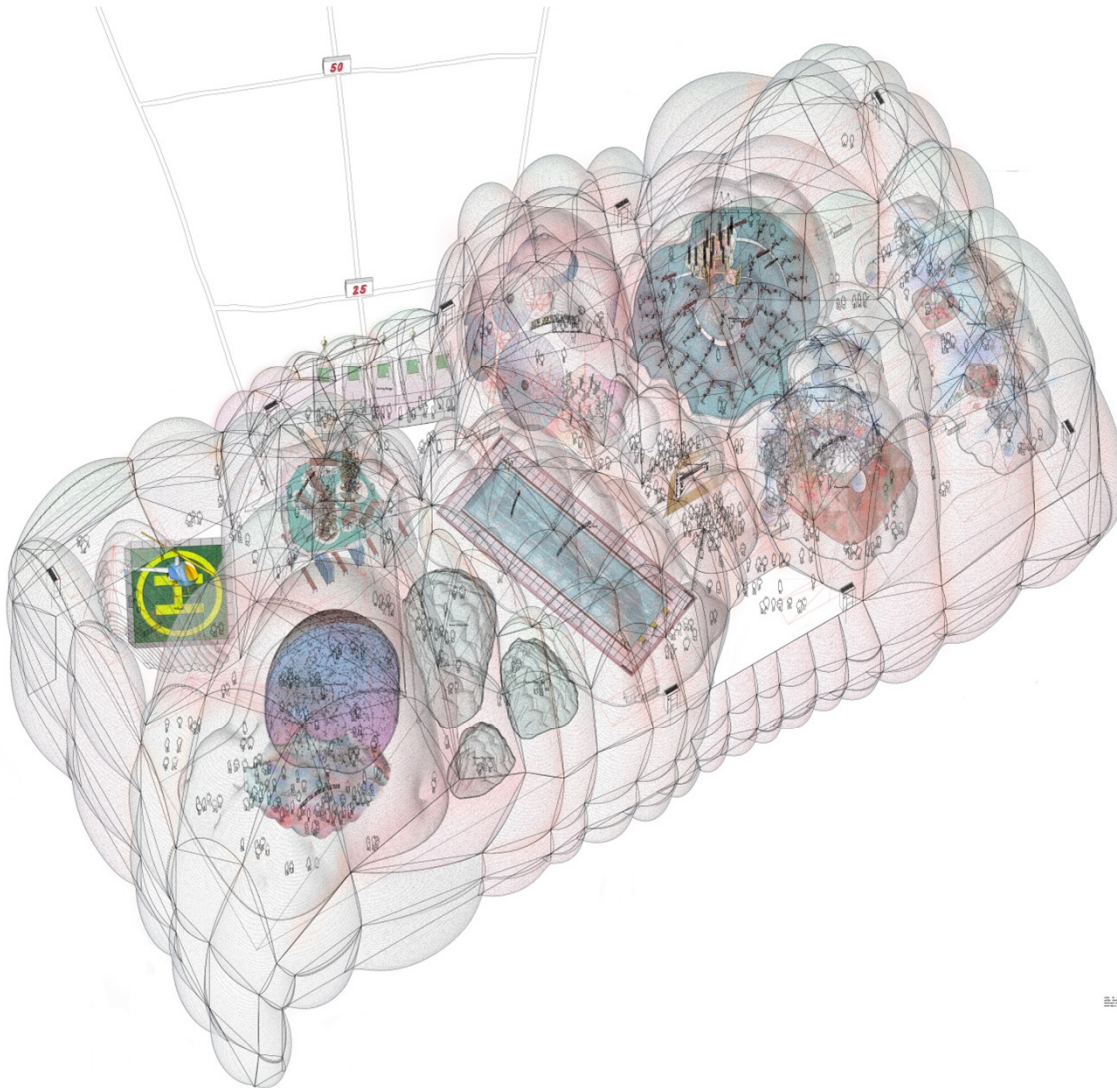
**Christopher Crawford Kelly,
London Metropolitan University**

Catch It, Store It, Use It: portable canopies that collect rainwater for reuse in urban spaces



Benjamin Reynolds, Graduate, Architectural Association School of Architecture

Prototype for using data centres as social spaces



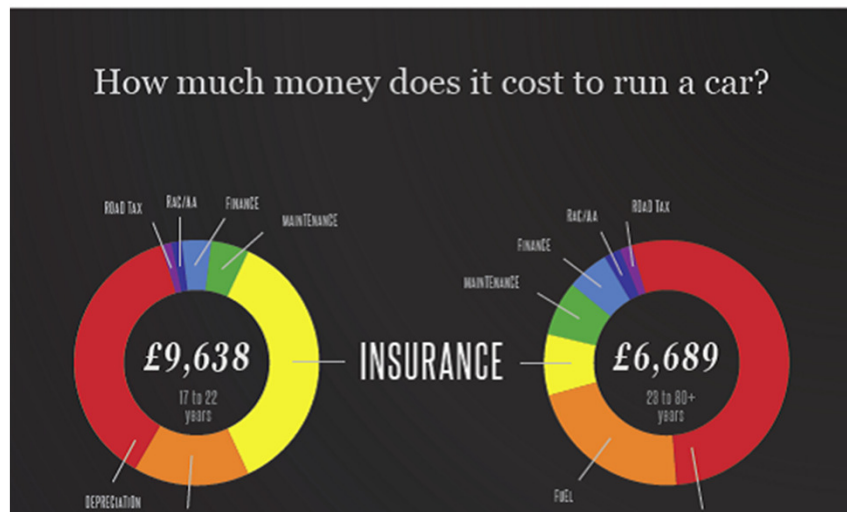
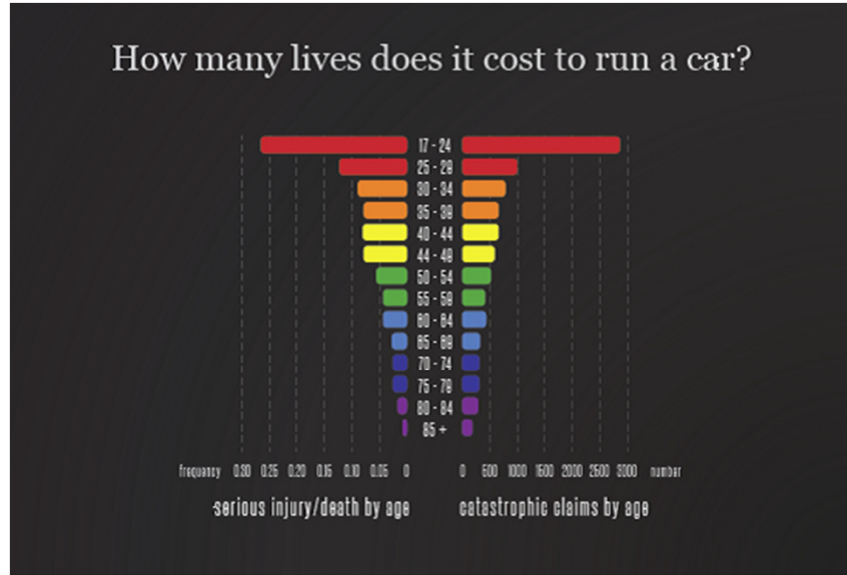
Social Insurance

Putting the people back into premiums



Judith Buhmann, Ravensbourne

Sqoot: linking safe driving to local incentives



How can these numbers be drastically reduced?

Easily, with **sqoot**

Really? Tell us more...

Well, it's a pretty neat pay-as-you-go service for students that rewards safe driving. Points are collected, then used for insurance discounts.

HIRE CARS FOR UNDER 25'S? YEAH, RIGHT. YOU MUST BE JOKING.

Nope, no joke. It's a convenient and affordable car rental scheme for young drivers.

What's the catch and who can join?

There's no catch. It's a graduated licence scheme that any student with a valid driver's licence and an NUS card can join.

Sign me up!

Zoe Whitehouse, DeMontfort University

Pass Pack: six extra months of instruction for newly qualified drivers to encourage safer behaviour

You receive the device in a pass pack once you have past your driving test.

Next the grip tape needs to be peeled off the tabs, then start.

Wrapping the device around the wheel overlapping the tabs.

Hold tightly for 10-15 seconds for the tape to bond.

30mph

25mph

35mph

Speaking of the Spiritual

Use design to help people be spiritual with clarity and confidence



Robert Watts, Plymouth University

Headspace walking guides: guided walks to improve wellbeing and sense of place



Alexander Hampl and David Sindlinger, Duale Hochschule B-W, Germany

Restaging familiar works of art in modern ways to provoke questions about contemporary values



Change Makers

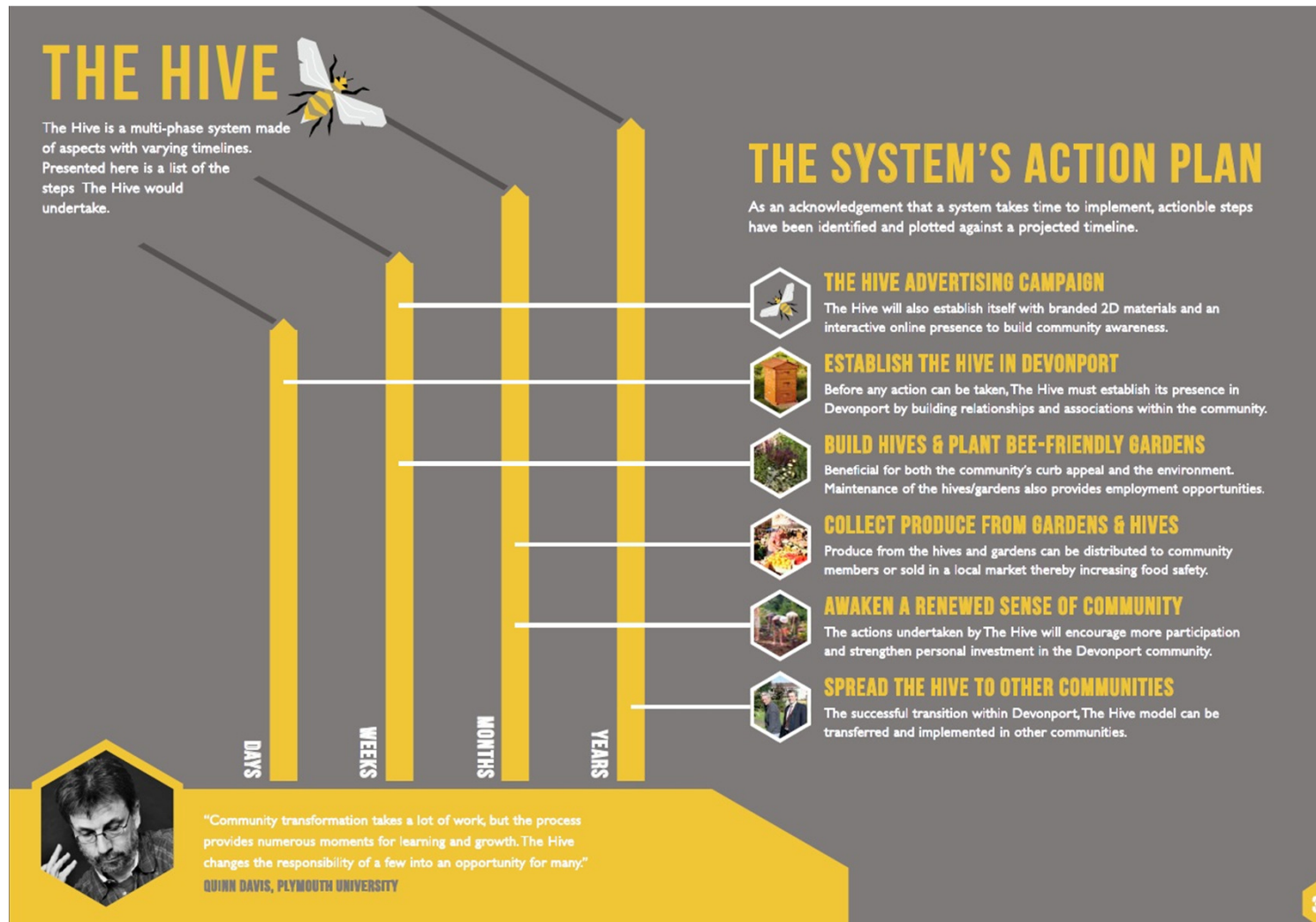
Use Design to eliminate waste, over-production or excessive consumption



Waitrose

Meredith Thompson and Nicole Shadbolt, Plymouth University

The Hive: community education + improvement scheme



Chris Redford, Sheffield Hallam University

Tinker: a stripped-back washing machine that encourages a culture of repair



The Good Journey

Make people look forward to their daily commute



Rebecca Godfrey, University of Westminster

Scenic Route: app providing more beautiful and active routes for commuters

the PROBLEM

Everyday, over 700,000 people commute into London and then complete their journey to work via the underground. Although the most obvious form of transport to reach final destination, it is the most crowded, unbearably hot, inefficient, and most importantly, least scenic method of transport. Yet the underground still remains to be the most popular on the second leg of a journey.

the SOLUTION

The Scenic Route will encourage commuters to break the mould of their daily routine and find a more beautiful and active route to work. It allows users to embrace their new journey by documenting it with photographs, and then publishing it for other people to share.

The Scenic Route creates options from Barclays cycle hire, the Thames Clippers, the Emirates cable car, and ofcourse on foot.

SCENIC route

WALK
WEEKLY COST: FREE

CYCLE HIRE
barclays
NEAREST CYCLE HIRE STATION: 19M
WEEKLY COST: FREE

THAMES clippers
DISTANCE TO BOAT STATION: 59M
WEEKLY COST: 24.98

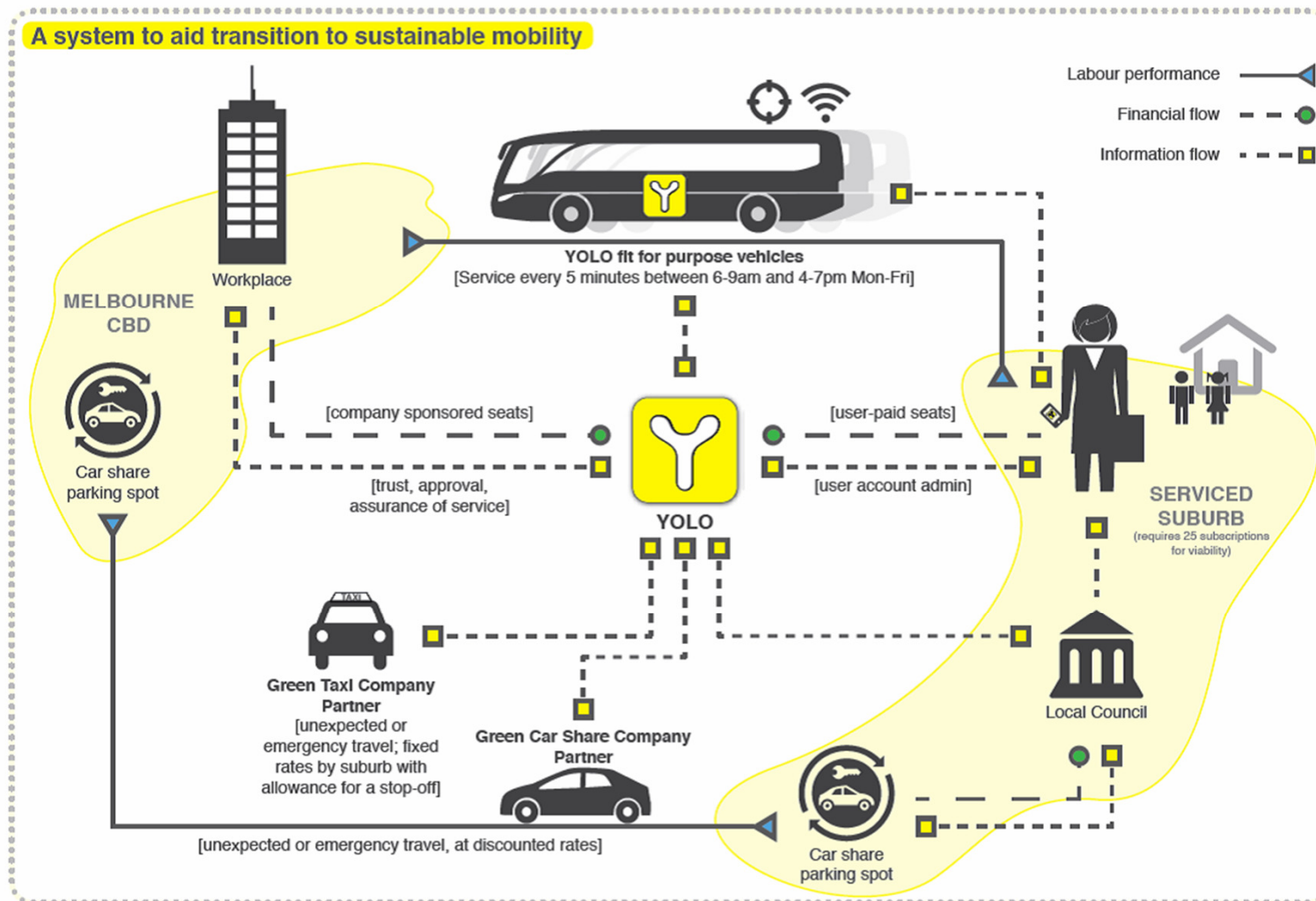
AIR LINE
emirates
DISTANCE TO AIR LINE: 598M
WEEKLY COST: 24.98

current location: LONDON - VICTORIA

current location: LONDON - WATERLOO

Carl Turner, Swinburne University, Australia

Yolo: a user-centred pick-up service for professionals as a replacement for single car commuting



Kay Humelt, Central Saint Martins

The Good Day Ticket: an aroma machine that lifts commuters' spirits at bus and tube stations

