


November 1901

*Journal of the Society of Arts, November 22, 1901.*

No. 2,537. ] NOVEMBER 22, 1901. [ Price 6d.  
VOL. I. ] To Non-Members

*J. Maton  
Carlisle  
1917*



JOURNAL  
OF THE  
SOCIETY OF ARTS

PUBLISHED EVERY FRIDAY.

CONTENTS.

Sessional Arrangements .. .. .	Small Screw Gauge .. .. .
First Ordinary Meeting -- Opening Address, by Sir William Henry Preece, K.C.B., F.R.S., Chairman of the Council .. .. .	Obituary -- Alfred Harris .. .. .
	General Notes -- Utilization of Pine Needles .. .. .
	Meetings for the Ensuing Week .. .. .

LONDON:  
PUBLISHED FOR THE SOCIETY BY GEORGE BELL AND SONS, YORK STREET,  
COVENT GARDEN  
1901.

*Registered as a Newspaper.*

No. 2781. VOL. LIV. MAR. 9, 1906.

PUBLISHED  
· EVERY ·  
FRIDAY.

# JOURNAL of the SOCIETY OF ARTS

## CONTENTS

NOTICES .. . . .	459
PROCEEDINGS OF THE SOCIETY..	461
GENERAL ARTICLES .. . . .	476
HOME INDUSTRIES .. . . .	478
CORRESPONDENCE .. . . .	481
OBITUARY .. . . .	481
MEETINGS.. . . .	481

For detailed Table of Contents see Page 2.

price to non-members 6<sup>d</sup>

LONDON PUBLISHED FOR THE SOCIETY BY GEORGE BELL & SONS, YORK HOUSE, PORTUGAL ST. W.C.

March 1906

December 1964

*The Journal of*  
**THE ROYAL SOCIETY**  
*for the encouragement*  
**OF ARTS**  
*Manufactures and Commerce*



FOUNDED IN 1754

DECEMBER 1964

NO. 5101 VOL. CXIII

NOTICES

List of Council and Officers. Forthcoming Meetings. Juvenile Lectures. Film Evening. BETRO Lectures. The Society's Christmas Card. Meeting of Council.

Page

1

PROCEEDINGS OF THE SOCIETY

INAUGURAL ADDRESS OF THE 211TH SESSION

THE POLITE ARTS AND THE SOCIETY OF ARTS By Sir Hilary Blood

CONTEMPORARY ART IN THE COMMONWEALTH By Donald Bowen

8

15

LONDON

JOHN ADAM STREET, ADELPHI, W.C.2

PRICE FIVE SHILLINGS



THE ROYAL SOCIETY

*for the encouragement*

OF ARTS

*Manufactures*

*and Commerce*

JOURNAL

MARCH 1975

NO 5224 VOL CXXIII

NOTICES

*Forthcoming Meetings*

*Forthcoming Regional Meetings*

*Film Evening*

*Soirée, 30th April*

*Programme for the 22nd Session*

*Industrial Design Bursaries Exhibition*

*Nominations for Council Offices*

*Albert Medal for 1975*

*Bicentenary Medal for 1975*

*Howard Prize for 1975*

*Meeting of Council 169*

PROCEEDINGS OF  
THE SOCIETY

*Adaptation of Man to World-Wide Air  
Travel*

*By Wing-Commander A. N. Nicholson 175*

*Can Science Solve the Energy Problem?*

*By Sir Owen Saunders 188*

*The Care of Cathedrals and Churches*

*By Bernard M. Feilden 196*

*Our Transport Heritage*

*By Sir Peter Allen 216*

*Summary of a Conference on Energy  
and the Environment 227*

*Price: 40p*

March 1975

# March 1988

# RSA

The Royal Society  
for the encouragement of Arts,  
Manufactures & Commerce

Founded in 1754

We . . .  
EDMUND HAPPOLD

Bridging the Unemployment Gap between Black and White  
People in Britain  
LINBERT SPENCER

CAD (Computer Aided Design) in British Industry  
ROYDEN AXE

SHELL SEMINAR  
The Way Ahead - Opportunities for Co-operation  
SIR DAVID NICKSON

# Journal

Vol. CXXXVI No. 5380 March 1988 £2

PATRON OF THE SOCIETY  
Her Majesty the Queen



## COUNCIL

### PRESIDENT

His Royal Highness The Prince Philip, Duke of Edinburgh, GC, KT

### VICE-PRESIDENTS

Professor Charles Hardy, MA, MBE, Chairman

John M. Ashworth, BA, FRCGS

Sir Peter Baldwin, BSc, MA, FRT, HonFRS

Mrs Lucienne Day, RDI, ABCA, RCSI

(Member, Faculty of Royal Designers for Industry)

The Lord Gibson, MA, HonFRS

Dame Diana Reade Harris, OBE, BA, FCP

Sir Ian Hunter, OBE

Sir Peter Macfield, MA, CBE, DSc, FRSA, HonFRS, FRT

Martin Moss, CBE

The Lord Nathan

Professor John Tunstall, CBE, MA

(Chairman, RSA Examinations Board)

### TREASURERS

The Rt Hon. Sir Kenneth Robinson, HonFRS, FRT, HonFRSGP

Mrs Dorris L. Widdowson, BA, MA, MA

### ORDINARY MEMBERS OF COUNCIL

Peter Andry, BSc, ABCA, HonFRS

Alan Bebbell, MScD

The Rt Hon. Sir Adam Butler

Peter Bysshe, OBE, CBE

The Lord Cherley, BA, FEA

The Lord Claydon, DL, MA

Michael Frye, M

Mrs Margaret Hall, OBE, RDI, FRACA, RCSI, FRAS

Dr Anne Hogg, MA

Sir Nicos Hovhly

Mrs Anne Jones, BA, DipEd

Kenneth Joyce, HonFRS, CBE, FRC, FRT

Michael Murray, BA, MA, HonFRS

William Morrow, FRAS

Sir Patrick Murray

Dr Elizabeth Nelson, BA

Stephen O'Brien, CBE

John Onda, CBE, BA, FEng, HonFRS, MA, FRC, FRCGS

Sir Austin Patten, CBE, MA, FRCGS

James Piddock, CBE

The Baroness Platt, CBE, DL, BA, CBE, FRAS

Air Marshal Sir Charles Pugh, FR, BA, FEng, FRAS

John Rankin (Tyr) Rathbone, MA, FRC, MA

The Reverend Canon George Tolley, MA, DL, DSc, FRAC, CBE

Christopher Weston, FRAS

Dame Margaret Weston, OBE, FRAS, CBE

### HONORARY VICE-PRESIDENTS

Sir Brian Butcher, MA, FRCGS

The Lord Hylton, CBE, MA

Sir James Taylor, OBE, DL, MA, DL

### SECRETARY

Christopher Lucas

### FINANCIAL CONTROLLER

John Shaw

### DEPUTY SECRETARY

Timothy Carroll

### CONTROLLER, PROJECTS AND COMMUNICATIONS

Margaret Coleman

### THE SOCIETY'S JOURNAL

which contains full reports of the Society's meetings, together with special articles, book reviews, etc., is published monthly.

### EDITOR

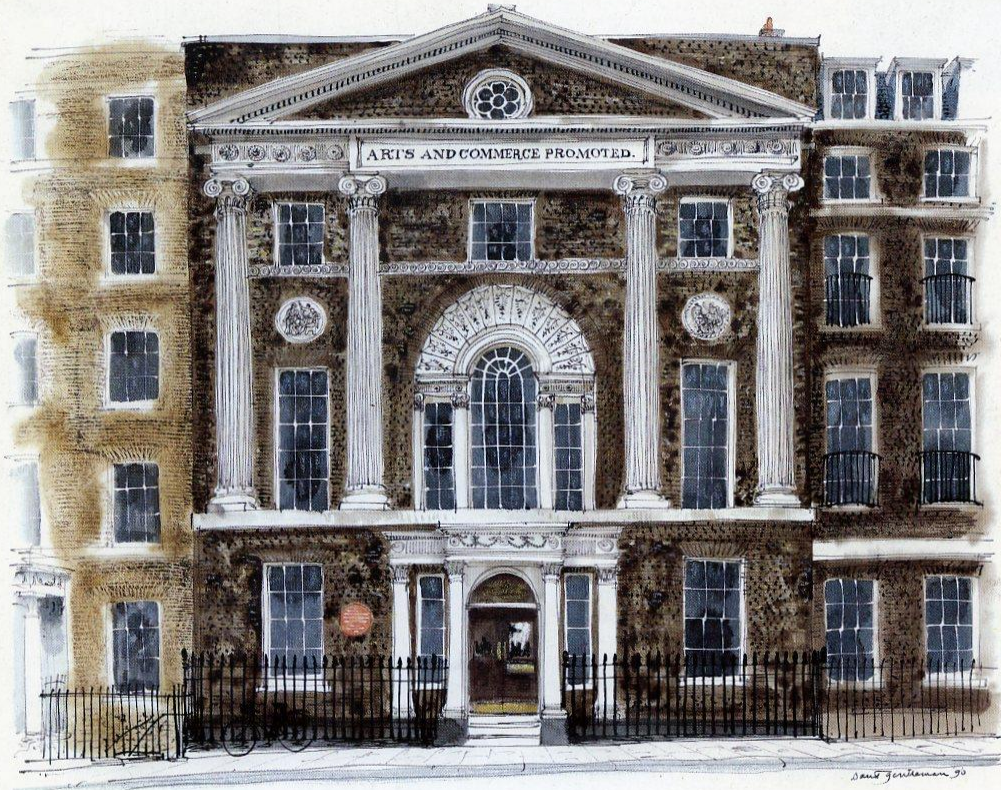
Ian Watt

All communications for the Society should be addressed to  
The Secretary, RSA, 2 John Adam Street, London WC2N 4EZ.  
Telephone 01-830 3117. Telex 892531. Fax 01-839 7807.

# RSA Journal

Vol.CXXXVIII No. 5405 April 1990 £3

April 1990



Managing Design in Industry ALAN BRICKWOOD

Sustainable Development in Latin America  
FERNANDO ORTIZ MONASTERIO

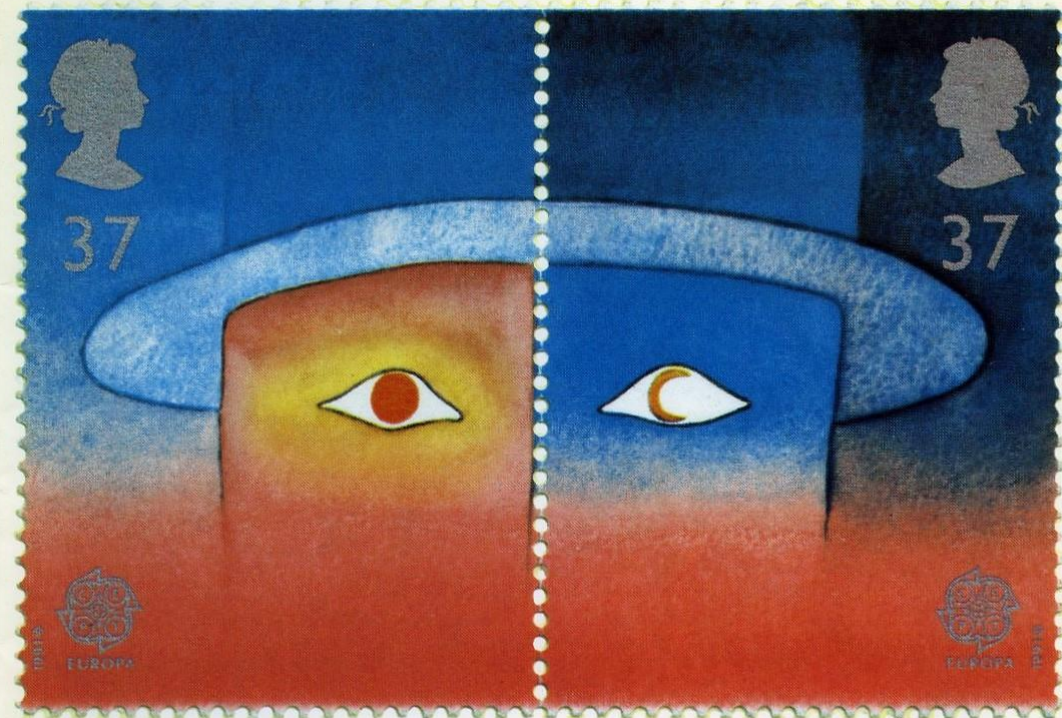
Inner City Reconstruction – Sheffield  
RICHARD C. FIELD, CLIVE BETTS, CEDRIC GREEN

Forensic Science, Medicine and the Law  
PROFESSOR BERNARD KNIGHT

June 1991

# RSA Journal

Vol.CXXXIX No. 5419 June 1991 £4



Environmental Conflict ROBIN GROVE-WHITE

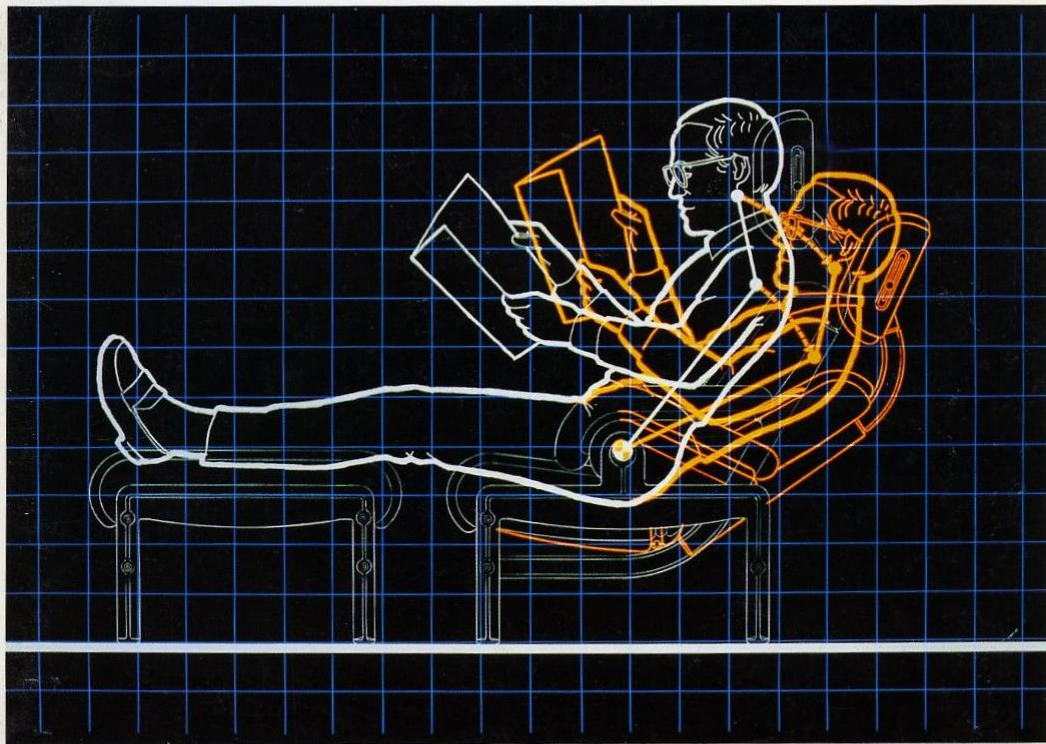
Lettering as Popular Art PETER BLAKE

Propaganda of the Built Environment DAVID LOCK

# RSA Journal

Vol. CXLII No. 5449 May 1994 £5

May 1994



United Nations NICHOLAS HINTON  
England's countryside MICHAEL DOWER  
IT and education ALAN BENJAMIN  
Biography VICTORIA GLENDINNING



# Winter 1999

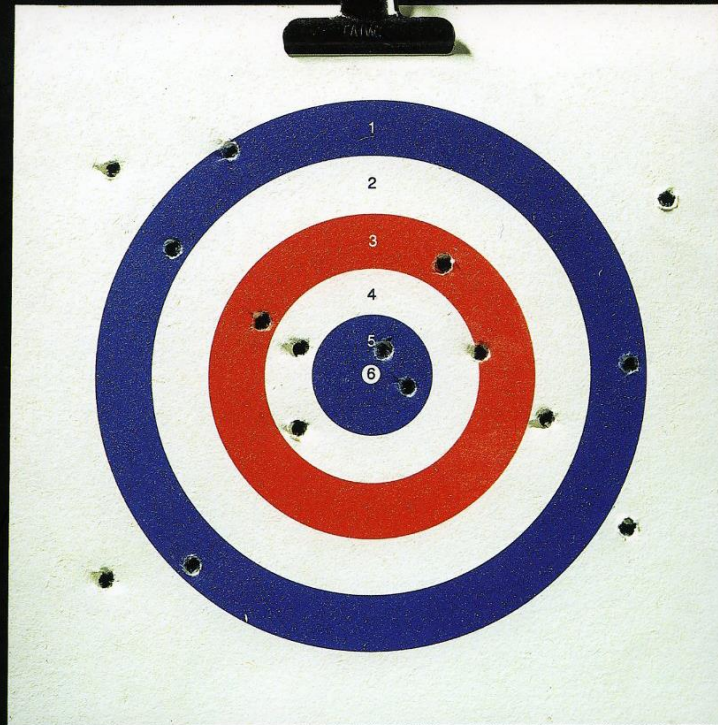
4 | 4 1999

RSA **Journa**

**Joined-up  
non-government**  
Genetic engineering  
Sustainable cities  
Millennium projects  
Our learning society

# Spring 2001

## RSA Journal



### **Professions under fire**

The pressures of  
public service  
Active citizenship  
Sustainable futures

# Winter 2001

## RSA Journal

4/4 2001

### RSA Archive

The famous blue plaques identifying where notable and remarkable people have lived and or worked is another of the Society's little-known innovations. The original plaques were terracotta in colour, one of which can be seen on the left of the entrance to the House.

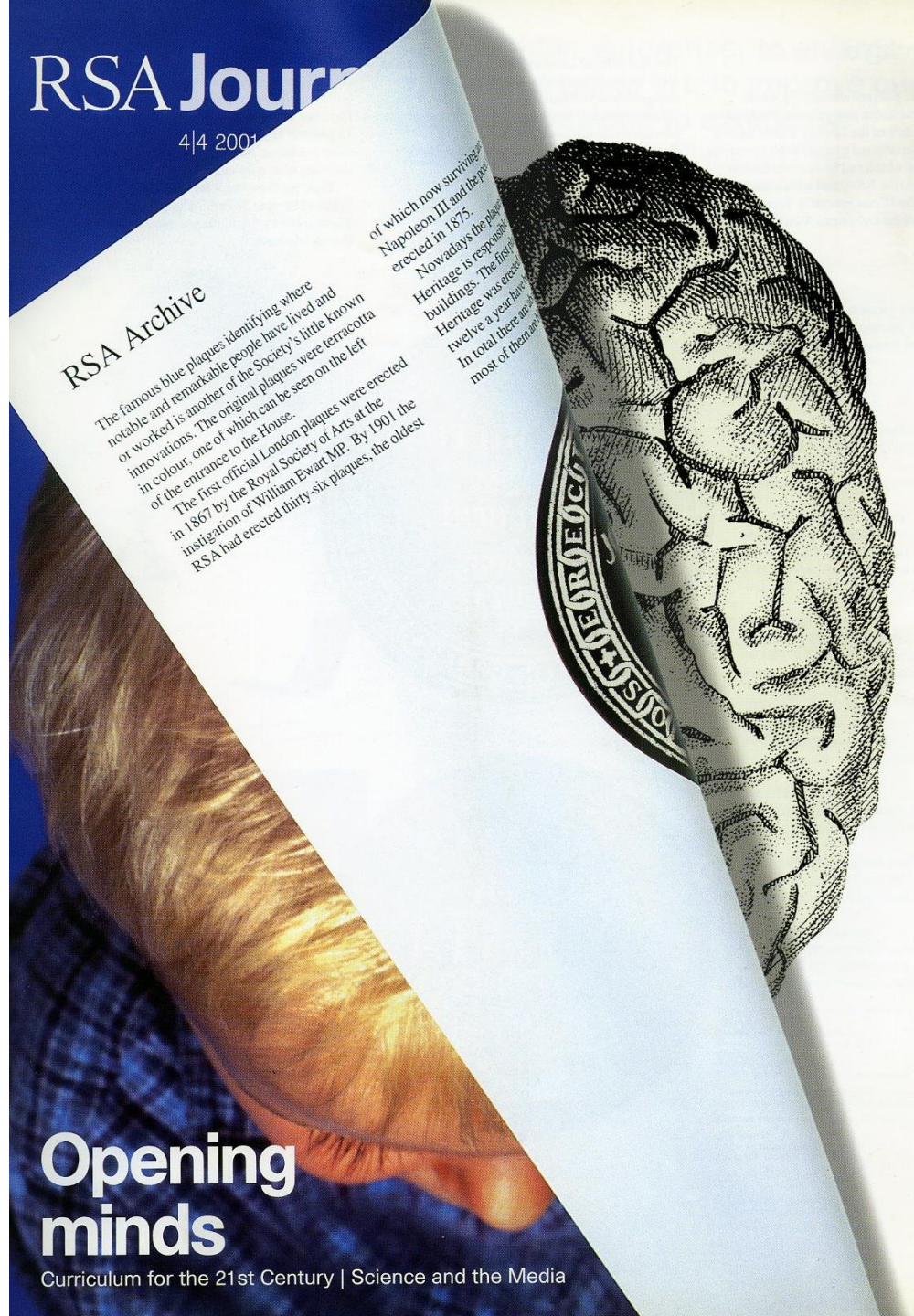
The first official London plaques were erected in 1867 by the Royal Society of Arts at the instigation of William Ewart MP. By 1901 the RSA had erected thirty-six plaques, the oldest

of which now surviving are those erected in 1875. Nowadays the plaques are made of blue ceramic.

Heritage is responsible for the buildings. The first plaques were erected in 1867. In total there are now over 1000 plaques and most of them are in London.

## Opening minds

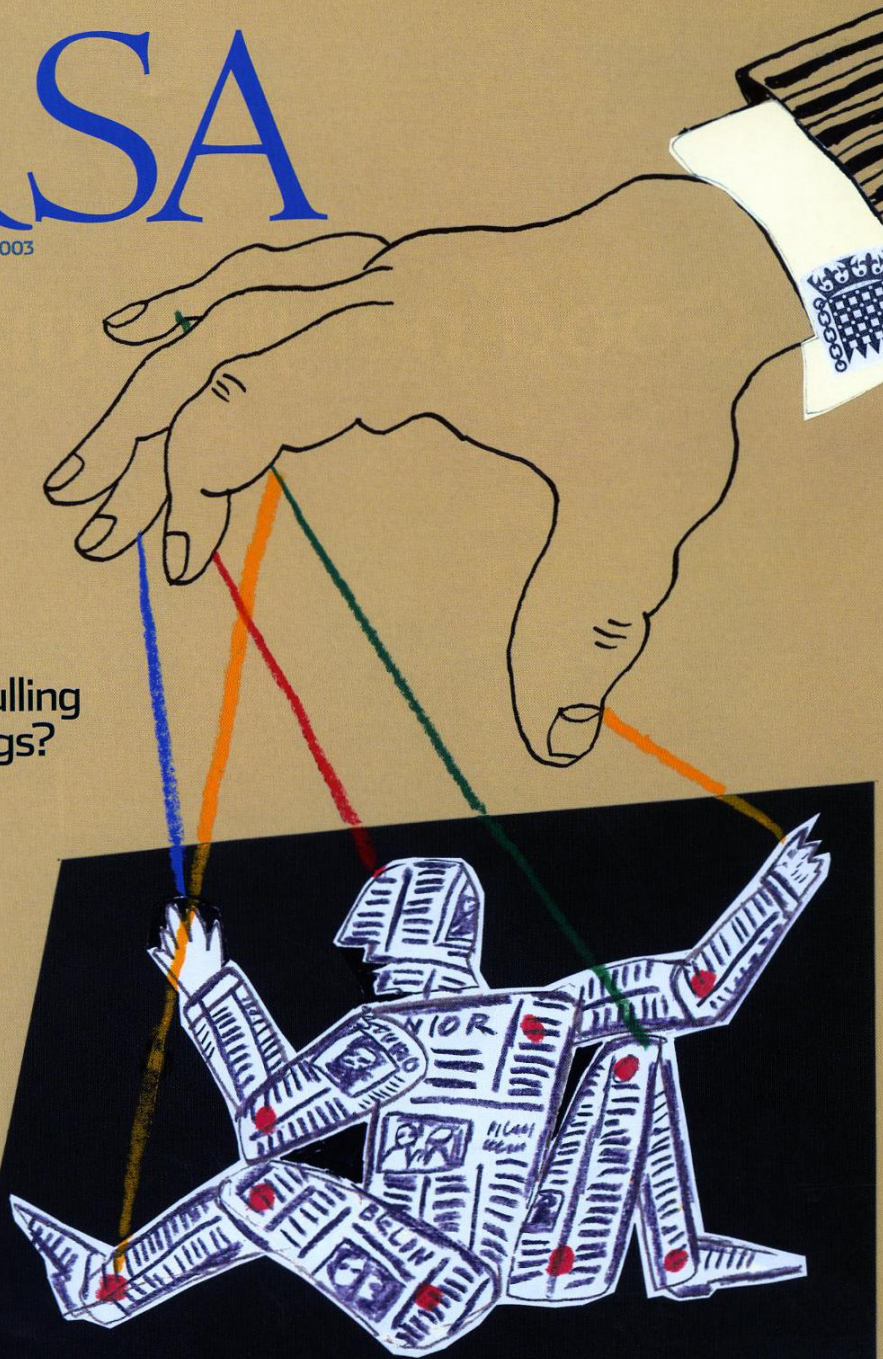
Curriculum for the 21st Century | Science and the Media



# RSA

JOURNAL JUNE 2003

Who's pulling  
the strings?



June 2003

December 2005

# RSA Journal

December 2005

[www.theRSA.org](http://www.theRSA.org)

## What price creativity?

The RSA's Adelphi Charter  
for intellectual property - p18

**Comprehensives or  
specialist schools?  
Five experts discuss** - p44

**New fiction: a novel approach  
to climate change** - p36



# October 2006



## 5 a year

Will you rise to the  
RSA carbon challenge? p16

Felipe Fernández-Armesto,  
Francis Fukuyama and Joseph Stiglitz p22

Al Gore's *Inconvenient Truth* p32

February 2007

February 2007 www.theRSA.org

# RSA JOURNAL

A *new*  
beginning

In this issue

Why Matthew Taylor has swapped No 10 for the RSA p18

Is UK business being suffocated by a surfeit of managers? p36

Ethical odyssey: our moral code must keep pace with science p50

# RSA Journal

SUMMER 2010



## Flying start

How the Whole Education initiative is helping young people to realise their potential in a changing world

**Page 38**

The future of democracy depends on secularism, argues Cécile Laborde

**Page 10**

Nick Pearce asks what politics would look like in an enlightened society

**Page 15**

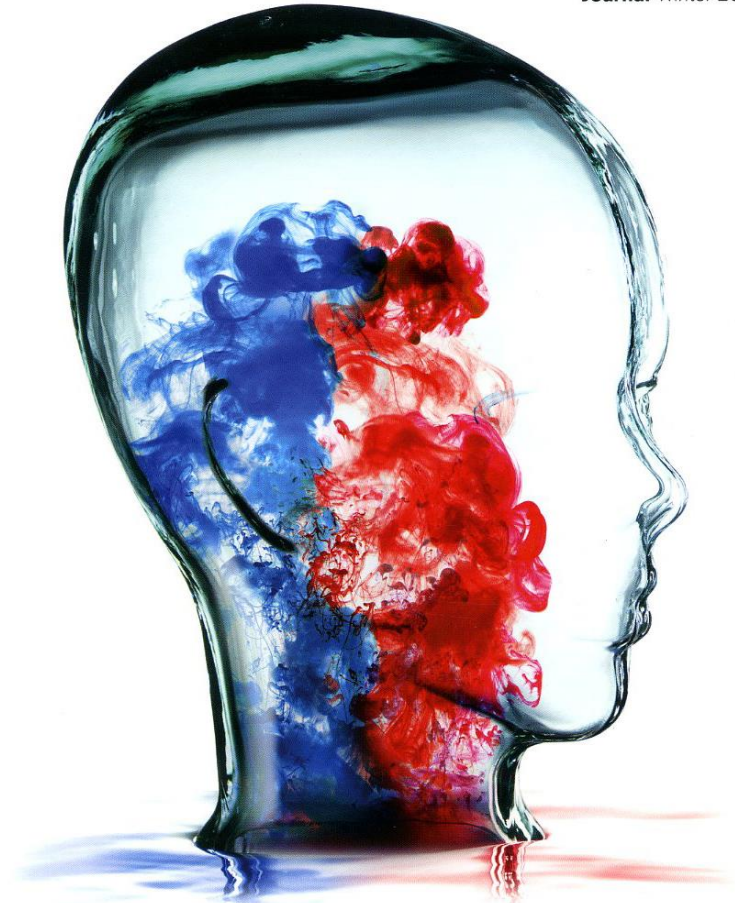
# Summer 2010



# Winter 2012

RSA  
21st century enlightenment

Journal Winter 2012



## America's changing face

**Taeku Lee** explores the effect long-term demographic trends will have on the politics and society of the US

**Benjamin Barber** on why cities, not countries, are best placed to solve the world's problems

**Sir Harold Evans** assesses the outcome of the Leveson inquiry

# RSA

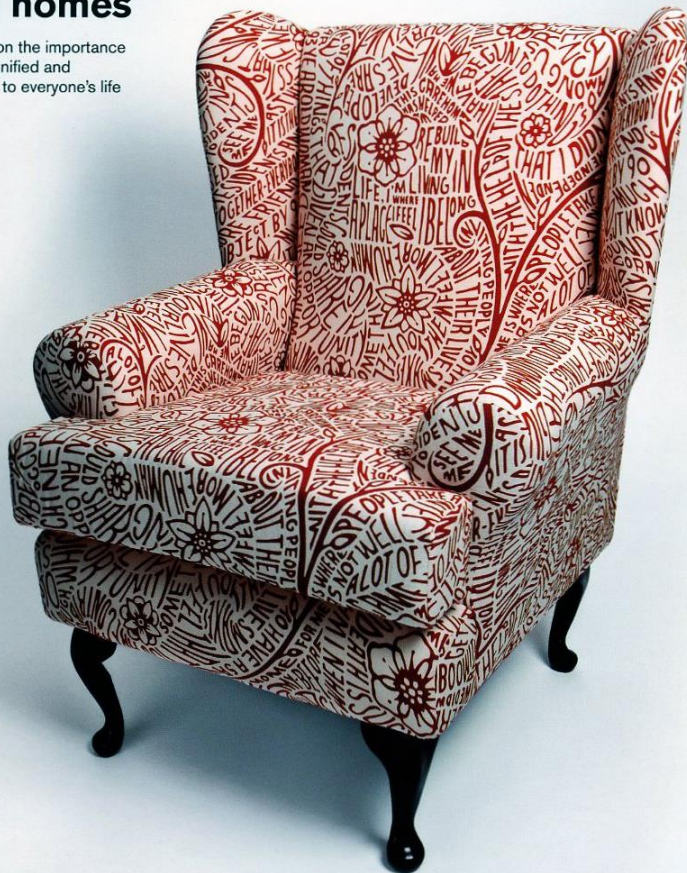
21st century enlightenment

Journal Summer 2013

# Summer 2013

## Caring homes

**Onora O'Neill** on the importance of ensuring a dignified and comfortable end to everyone's life



**Stephen T Asma** looks at how we could construct a better care system around our biological biases

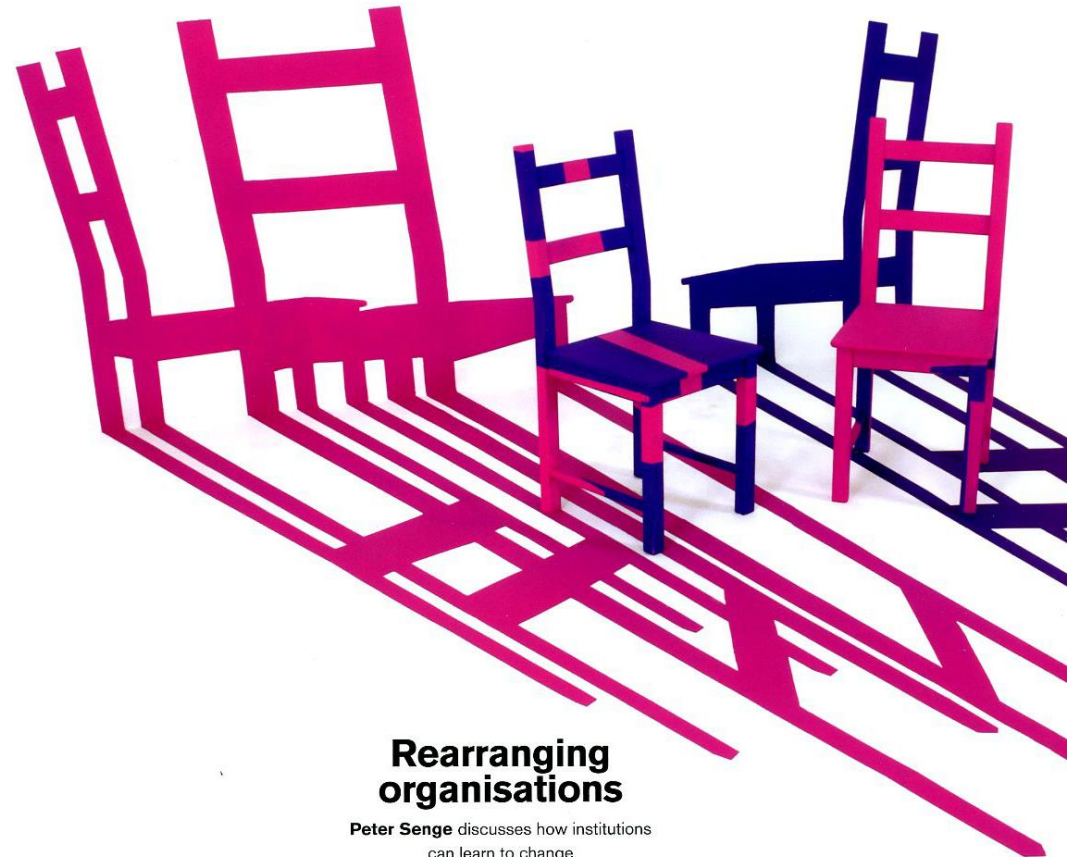
**Susan Himmelweit** explores the economics and gender roles of the care industry

# Spring 2014

# RSA

21st century enlightenment

Journal Issue 1 2014



## Rearranging organisations

**Peter Senge** discusses how institutions can learn to change

**Saskia Sassen** on how exclusion has replaced inequality

**Jon Savage** argues that we should redefine the teenager



RSA

21st century enlightenment

Journal Issue 4 2015

# Winter 2015

## Community chance

**Matthew Taylor** argues the case for both communitarian and top-down approaches to policymaking

**Anthony Giddens** discusses the risks and opportunities of the digital revolution

**Hilary Cottam** on innovation in public services and the gap between rhetoric and reality