



**RSA Coffee House
Fellows' Evening
04 August 2016**

BURRELL | FOLEY | FISCHER
ARCHITECTS AND URBAN DESIGNERS

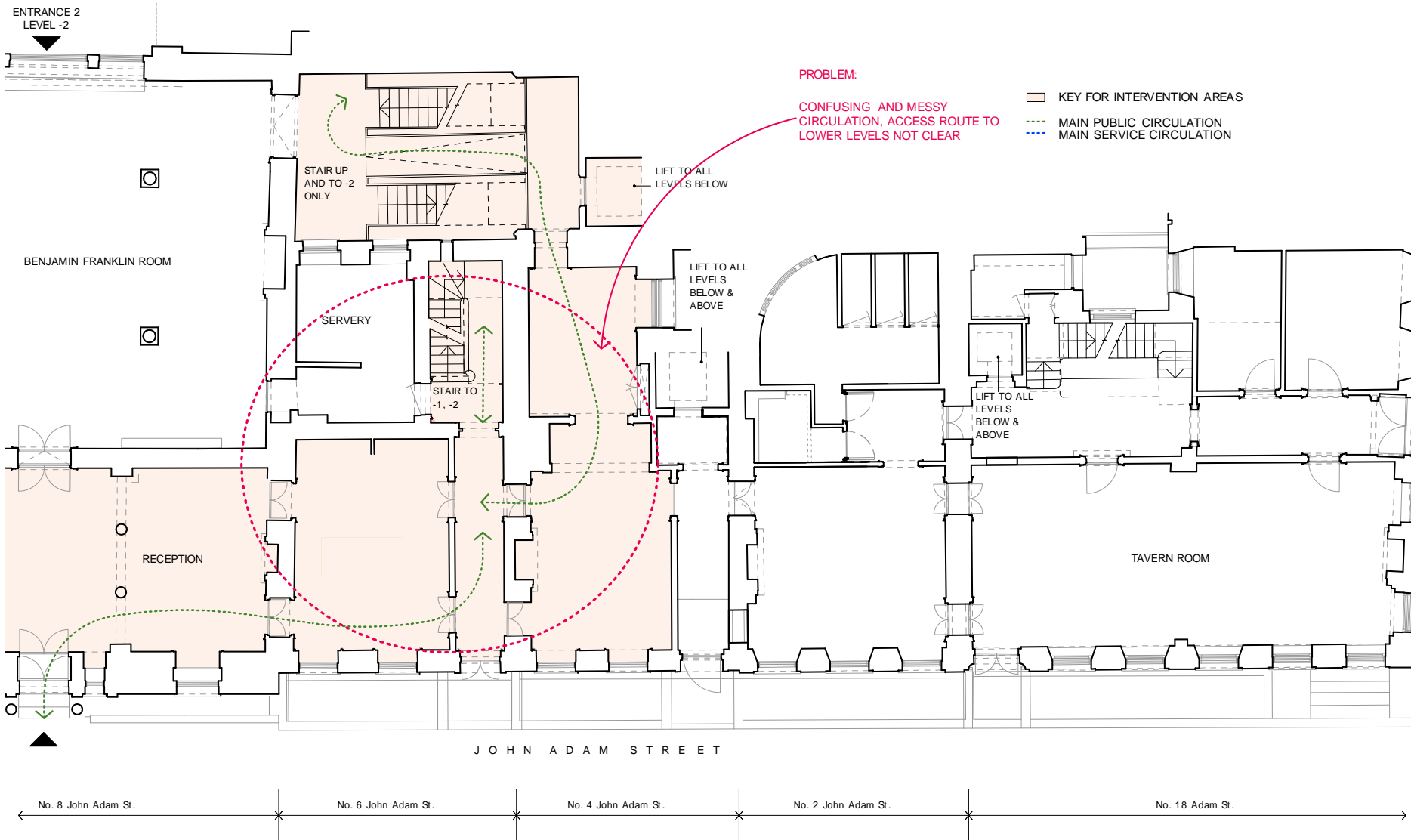
Key objectives of the RSA Coffee House Project:

- To create a better environment for users of the house to congregate, assimilate ideas and work;
- To address issues arising from the Fellows' survey including:
 - The provision of a new and enhanced all day dining offer;
 - The provision of an increased number of quiet working spaces;
 - The creation of improved collaborative spaces for small groups of people to discuss and work together on projects;
- To further enhance the look and feel of the RSA House, reflecting its role as a meeting place for enlightened thinkers, the RSA's 'Power to Create' approach and the innovation that flows from it;
- To achieve better integration between the various uses of the House and the communities that occupy it, and therefore the potential for more informal contact in 'blended spaces';
- To do more to express the ethos of the RSA.

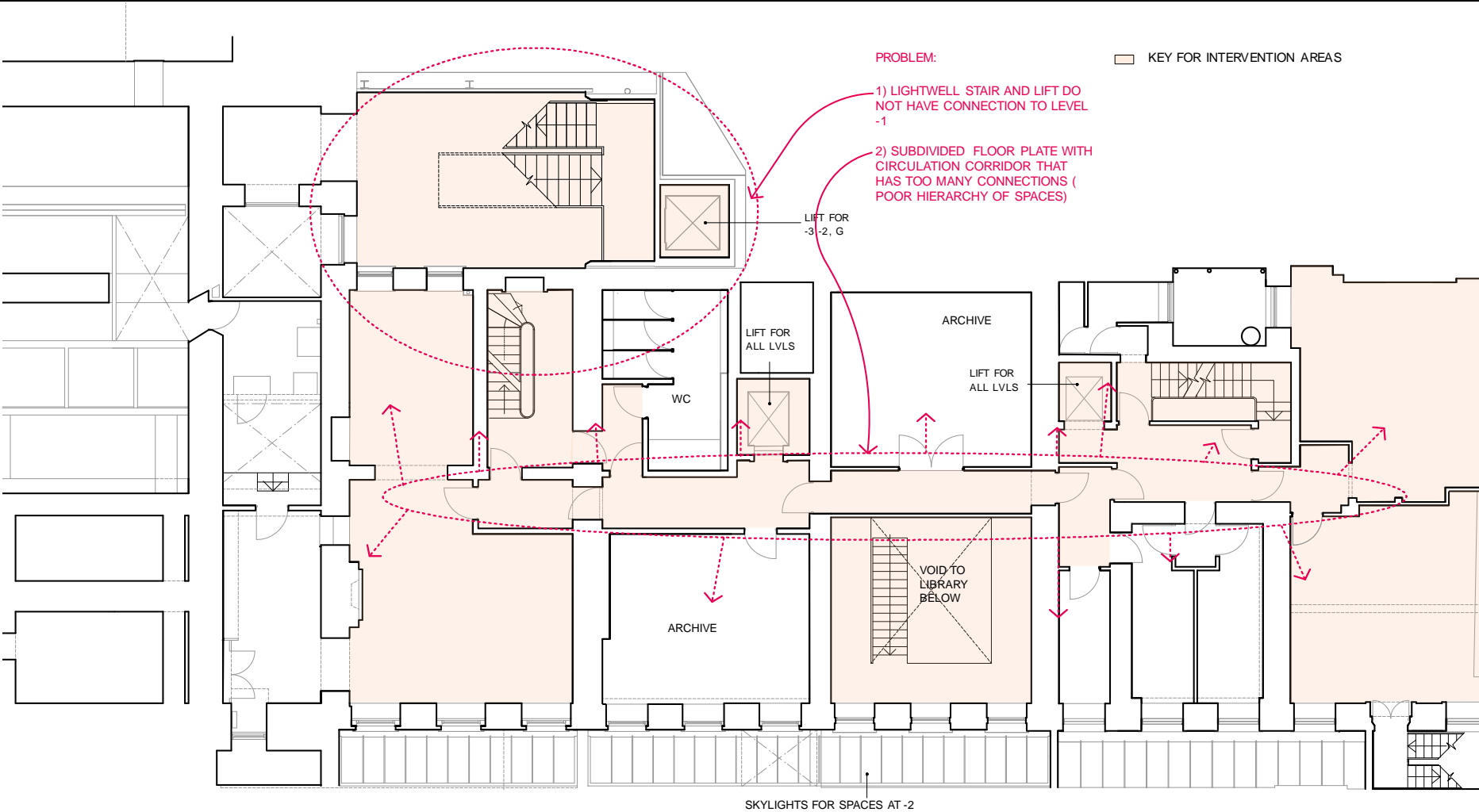
Action since Competition Stage:

- Detailed briefing meetings with RSA to capture requirements and aspirations for:
 - The Archive;
 - The Library;
 - Catering for the RSA Coffee House and Events;
 - Facilities being displaced at Level-1 and -2 to accommodate the RSA Coffee House;
 - Sustainability; signage, interpretation and display; lighting; heating and cooling; AV/ICT.
- Development of the RSA's Strategic Brief for the RSA Coffee House.
- Development of a Concept Design building on the approach presented at competition stage and taking on board the outcome of the detailed briefing meetings.

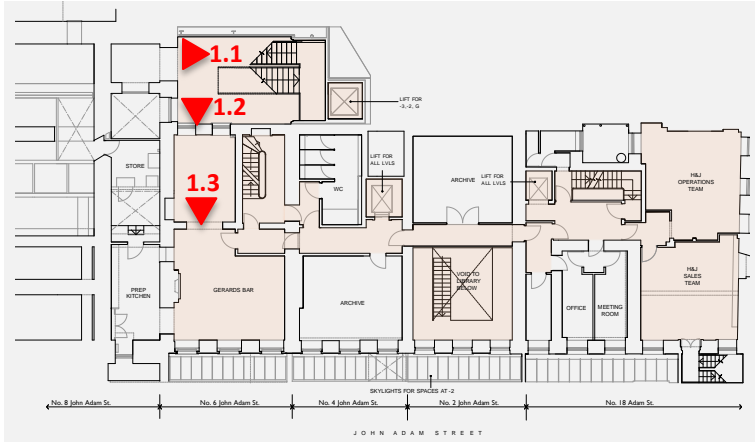
As existing Level 0



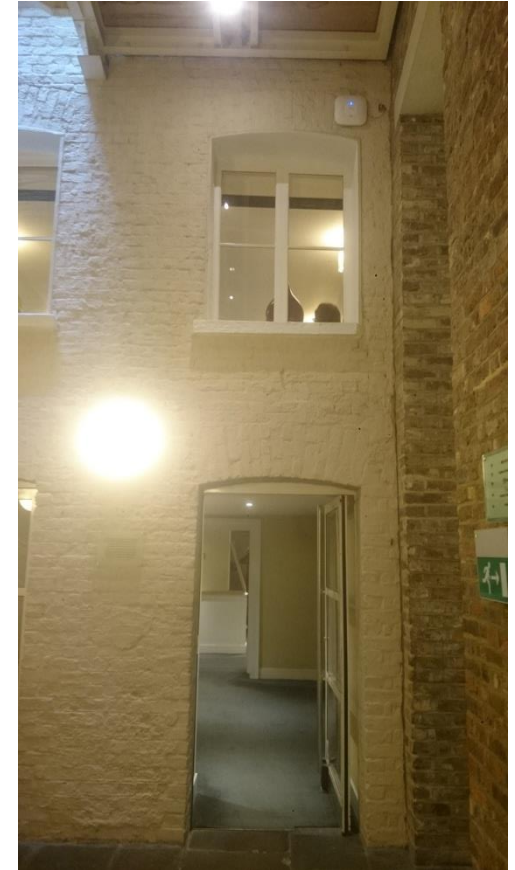
As existing Level -1



As existing Level -1



1.1



1.2

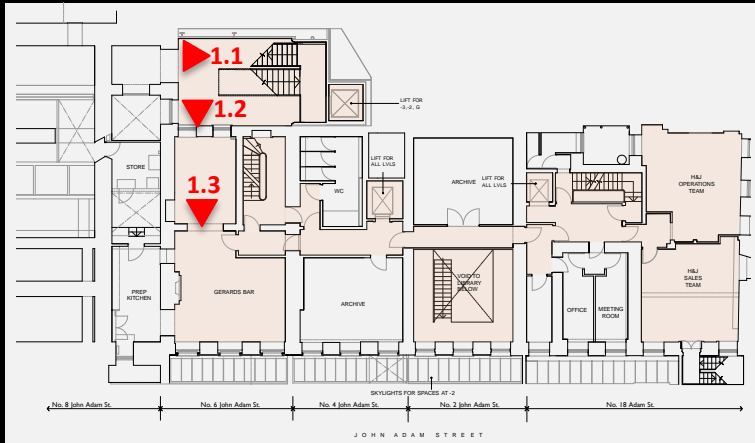


1.3

-1

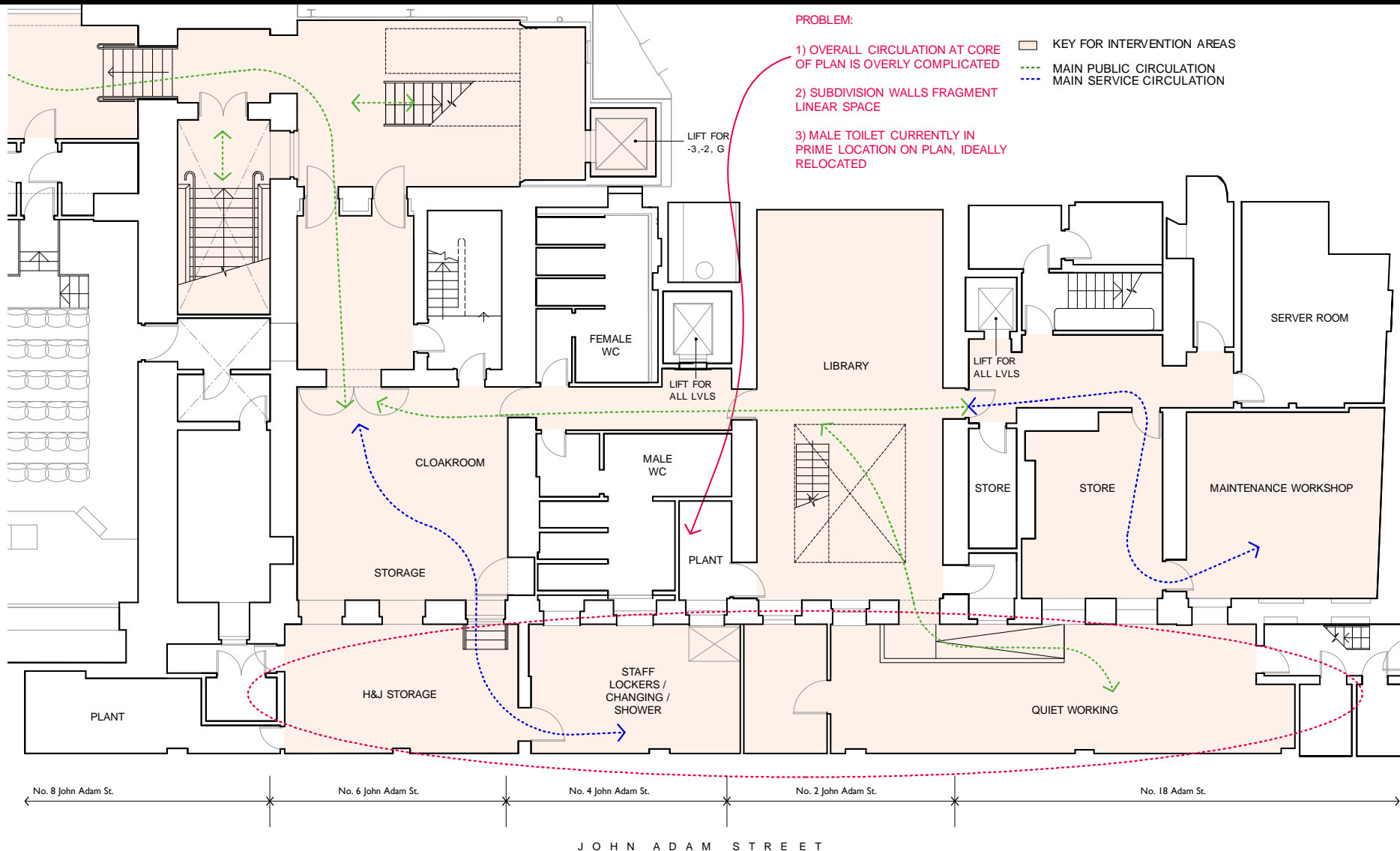
-2

As existing Level -1



Potential for a direct connection to the RSA Coffee House at Level -1 from the main accommodation stair and list

As existing Level -2



As existing Level -2



2.1



2.2



2.3



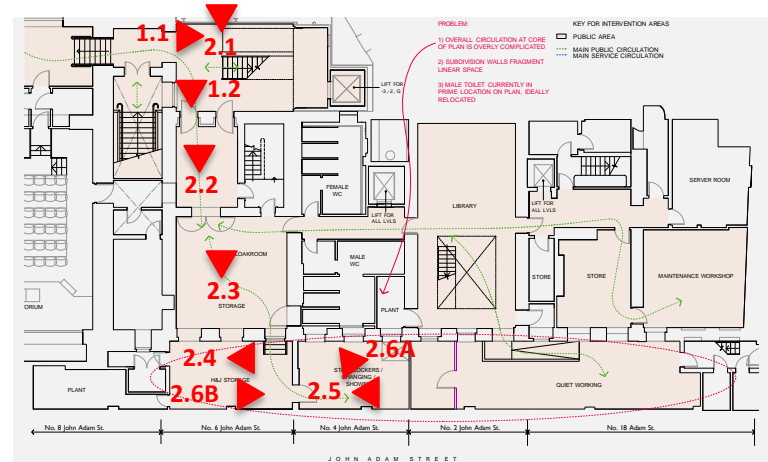
2.4



2.5



2.6A



2.6B

As existing Level -2



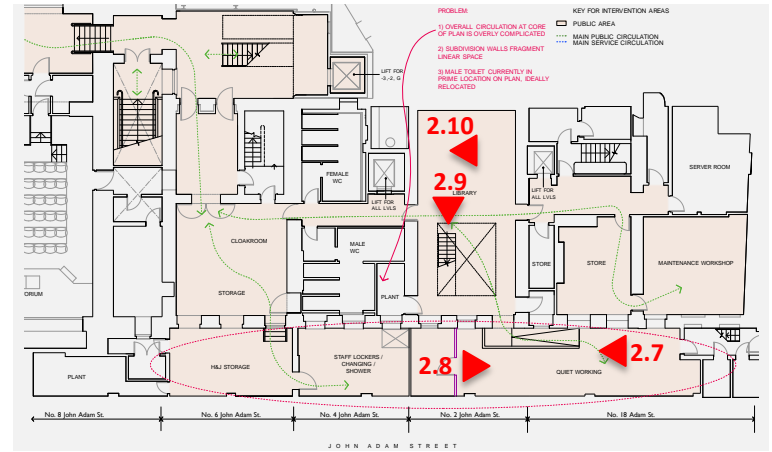
2.7



2.9

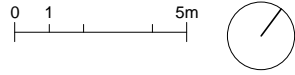


2.10



2.8

As existing Level -3

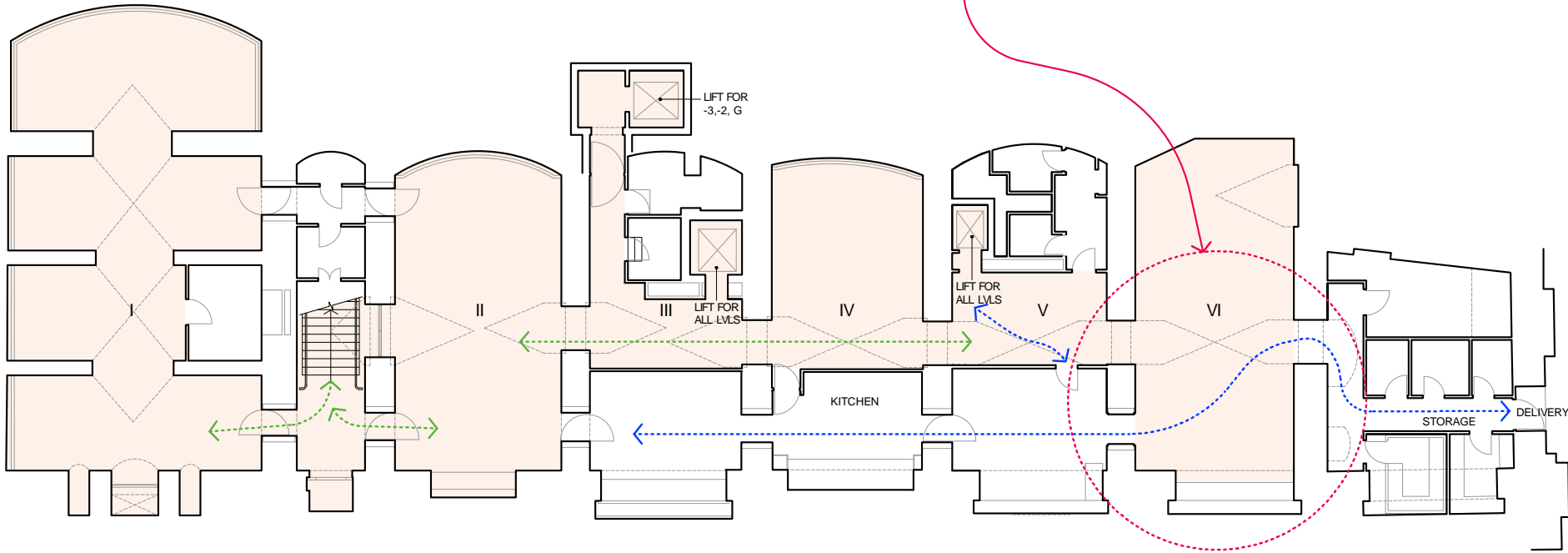


PROBLEM:

KITCHEN DETACHED FROM STORAGE SPACE & PUBLIC CIRCULATION CLASH WITH SERVICE CIRCULATION

KEY FOR INTERVENTION AREAS

--- MAIN PUBLIC CIRCULATION
 --- MAIN SERVICE CIRCULATION



JOHN ADAM STREET

Level 0

Resume of key principles of Concept Design

Level 0:

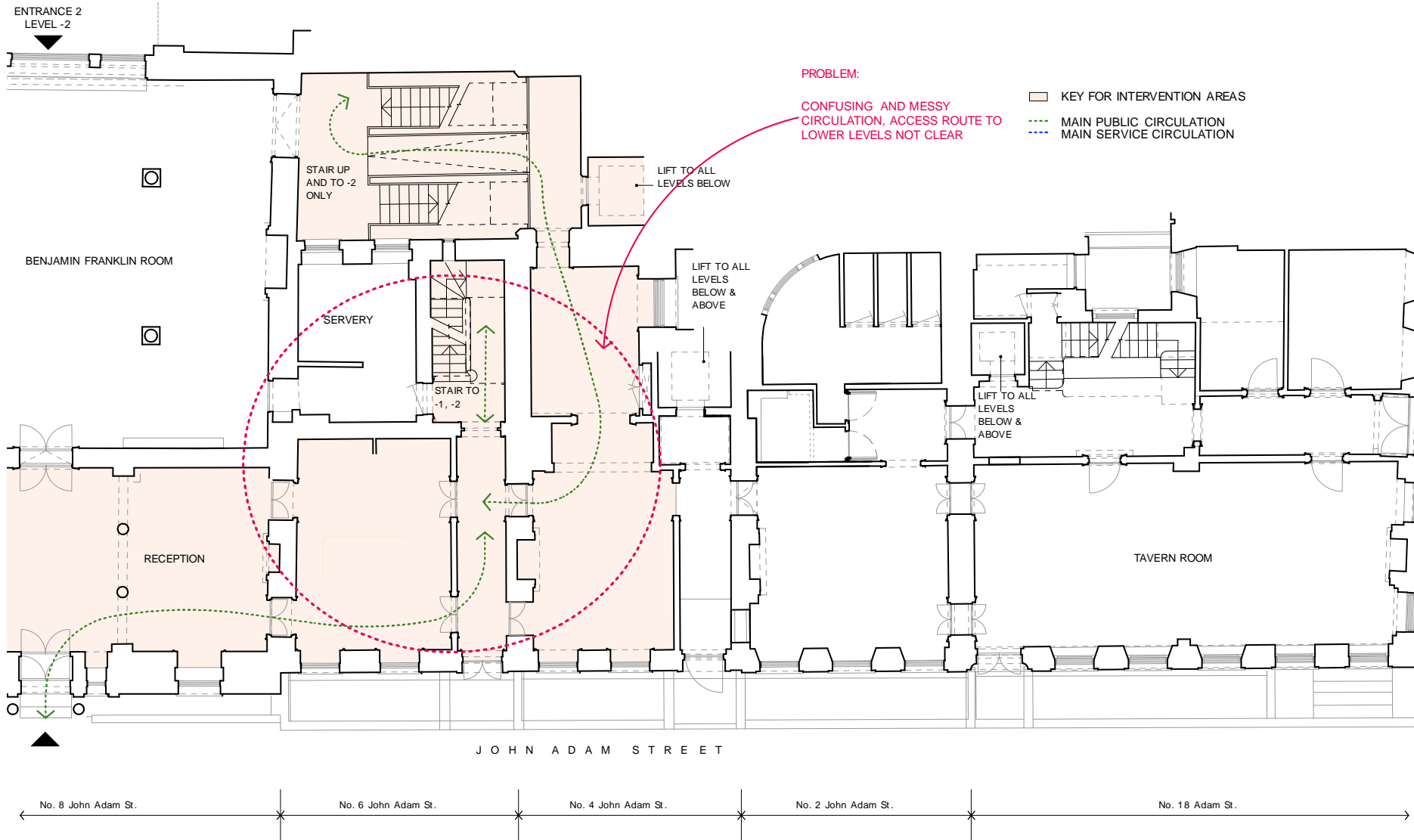
Objectives:

- Reconfiguring visitor circulation so it is more legible and direct.
- Adapting the main accommodation stair in the rear light-well to No 6 to make it more effective.

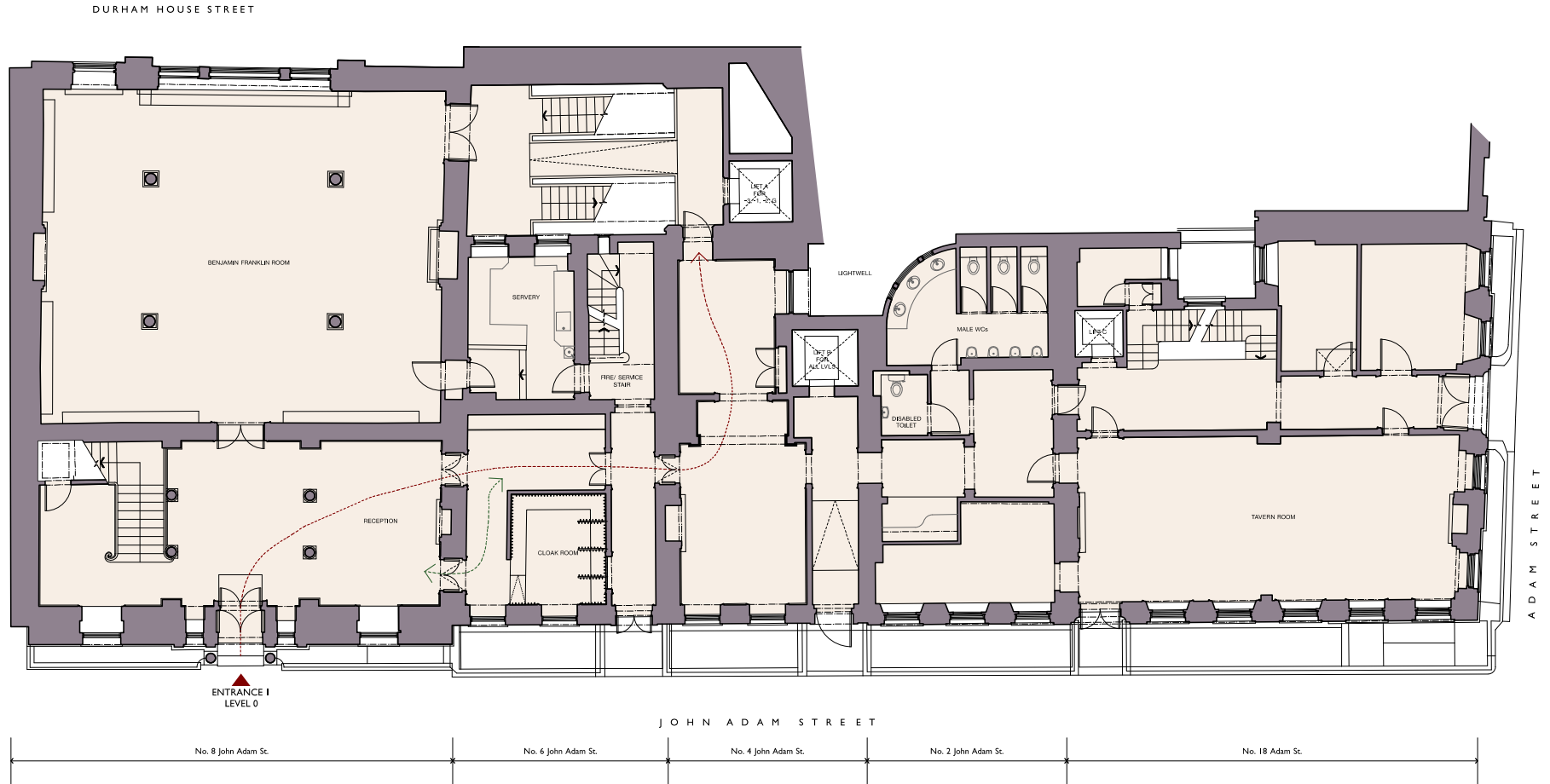
Developed Solution:

- The cloakroom has been reconfigured and the counter relocated so as to avoid queues from impeding the main visitor circulation.

Level 0: Existing



Level 0: Proposed



Level -1

Resume of key principles of Concept Design

Level -1:

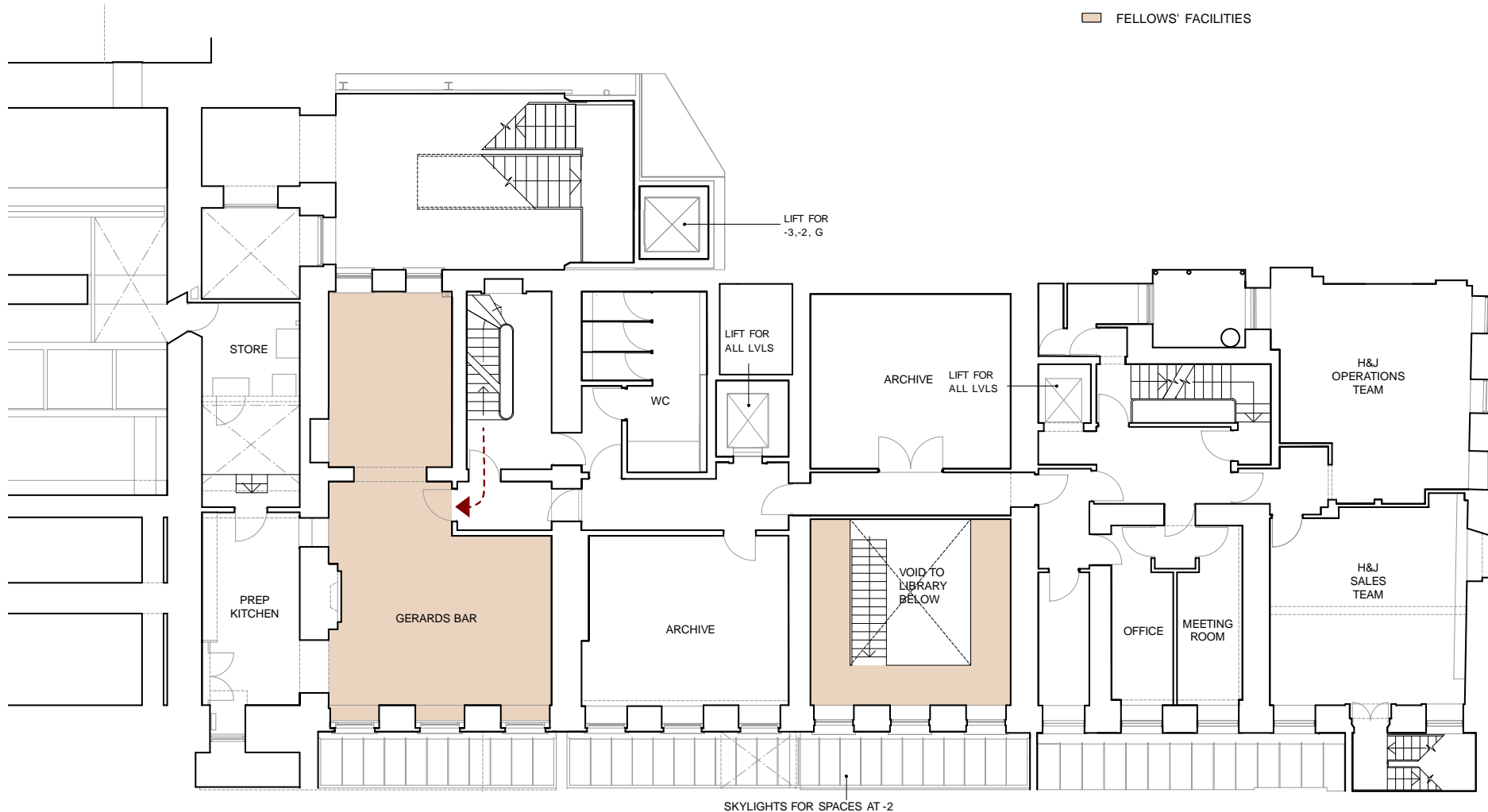
Objectives:

- Creating a direct link to the RSA Coffee House from the main accommodation stair and Lift A;
- Creating a U-shaped series of enfilade spaces fronting John Adam Street;
- Establishing a strong link between Levels-1 and -2 via a *Hellerup Stair*;
- Separating visitor and service circulation as much as possible.

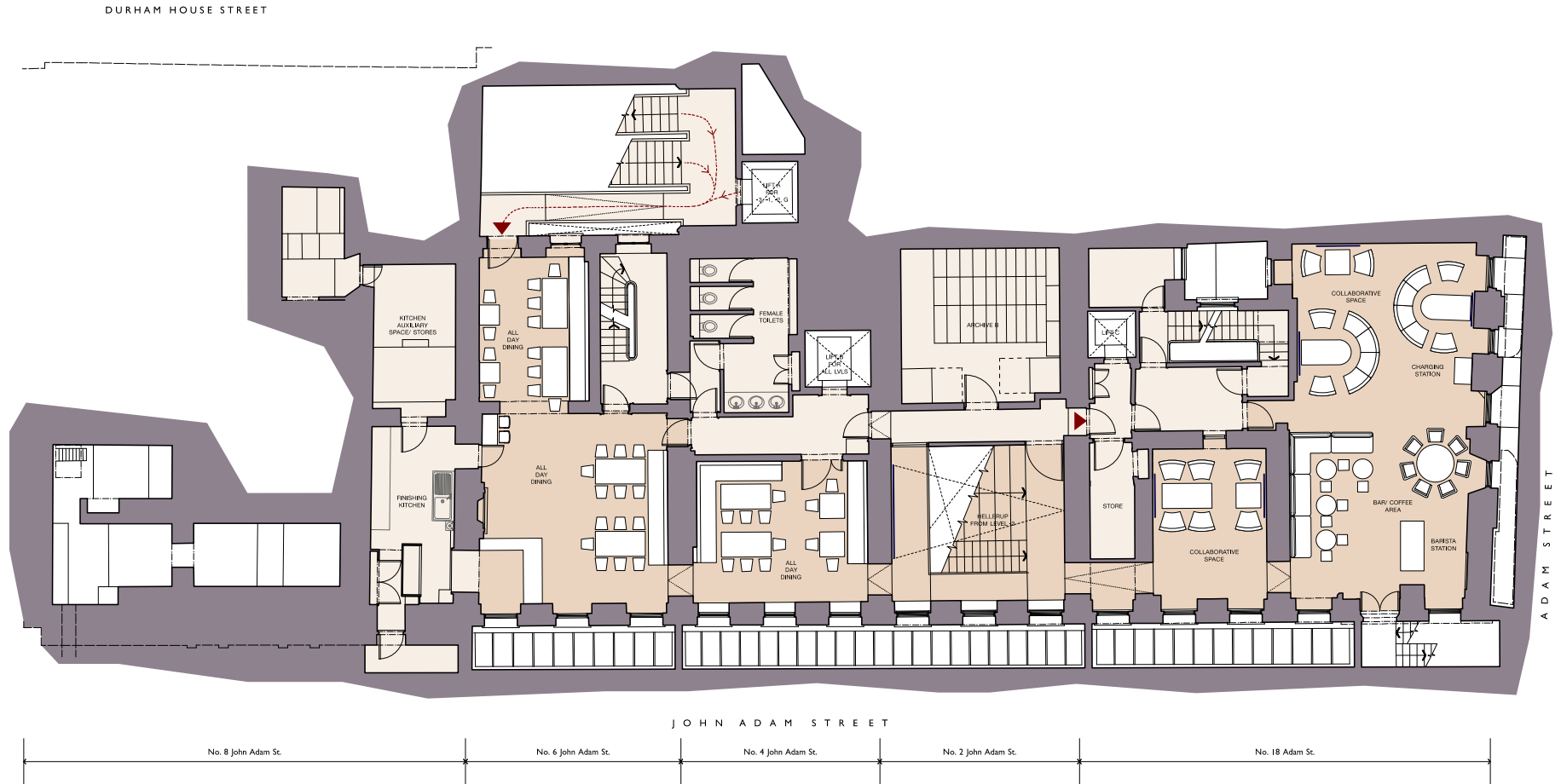
Developed Solution:

- The existing prep kitchen is to be equipped as a finishing kitchen.
- The tables for all day dining are located close to the finishing kitchen and pass/servery.
- The bar/coffee area is located on the corner of John Adam Street and Adam Street.
- A barista station/sales point for drinks is provided, so there is an option to man it at busy times.
- The collaborative working spaces at Level-1 are located in No 18 Adam Street.
- Static & mobile archive shelving, (currently located in Archive B) and the plan chests (currently in Archive C) are consolidated into footprint of Archive A - this will need to be climate controlled and have gas suppression.
- Shelving for current issues of RSA journals, Fellows publications and Events books and latest acquisitions provided within Level-1. Further shelving could be provided at Level-1 if desired.

Level -1: Existing



Level -1: Proposed



Level -2

Resume of key principles of Concept Design

Level -2:

Objectives:

- Maintaining a direct link from the main accommodation stair and Lift A;
- Creating a series of enfilade spaces fronting John Adam Street;
- Providing a direct sightline through the spaces to facilitate interaction and collaborative working.

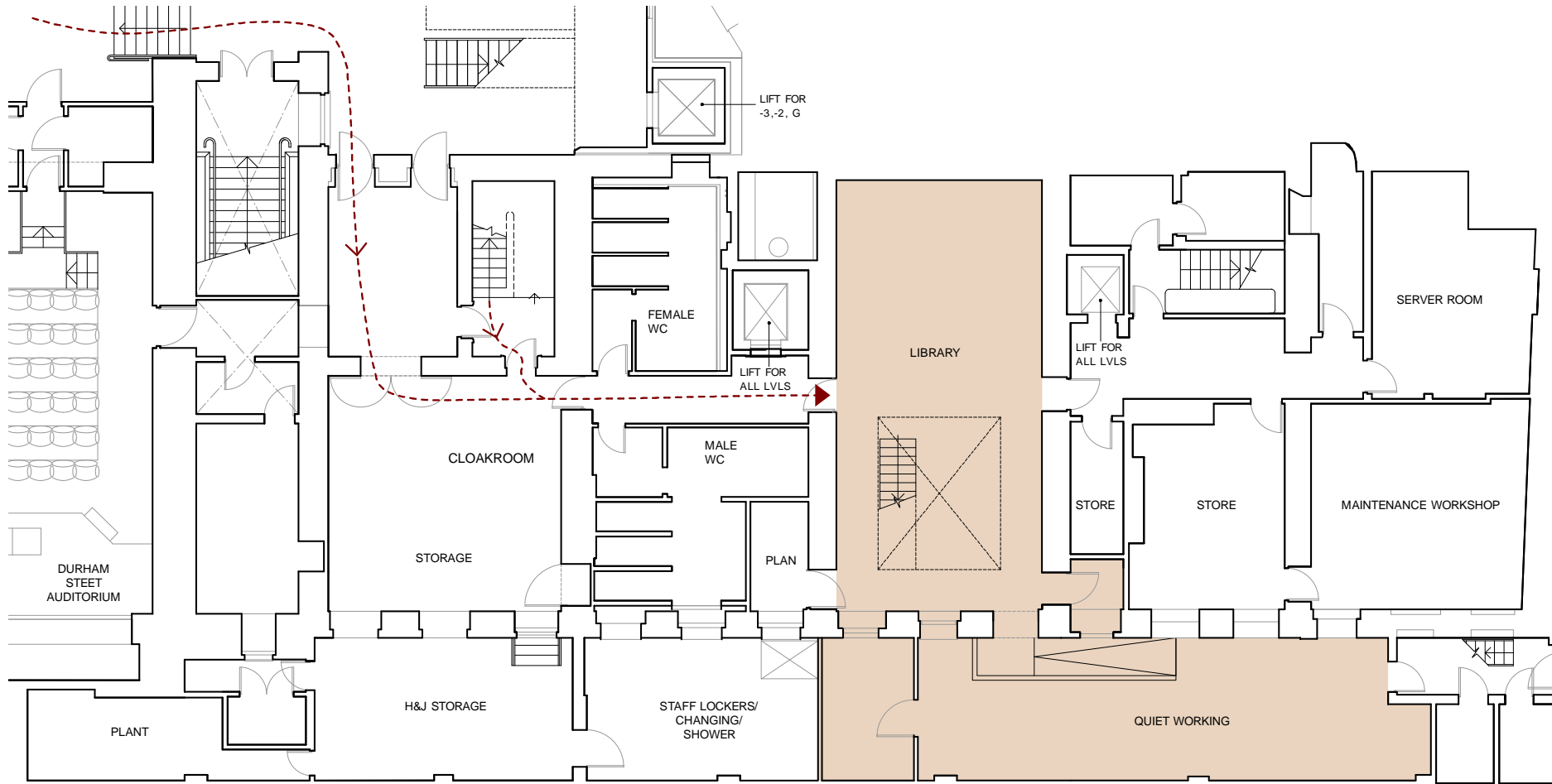
Developed Solution:

- A cloakroom for coats and bags, with the facility for it to be manned has been re-provided.
- The librarians desk and self issue desk is located where it is visible to Fellows at the point of entry into the library
- The feasibility of meeting the brief requirement for linear meterage of shelves has been assessed.
- Desks for researchers have been re-provided.
- A lobby with acoustic rated doors has been provided between the researchers' desks and plantroom.
- The existing linear store in No 18 Adam Street has been retained and extended.
- A new store has been provided in the lift lobby to No 18 Adam Street.
- Provision made for relocated staff lockers for H&J and House staff together with changing, shower and toilet. This has been designed to meet accessibility standards set out in Part M of the Building Regulations.
- The maintenance workshop is retained, and a new access provided from the lift lobby. With improved, more space efficient shelving, it is proposed that maintenance storage is consolidated within the maintenance workshop.
- The toilets have been replanned to provide a unisex disabled toilet and superloos with a view to optimising provision for Events and the RSA Coffee House.

Level -2: Existing

ROUTE FROM DURHAM STREET ENTRANCE

FELLOWS' FACILITIES



Level -2: Proposed



Level -3

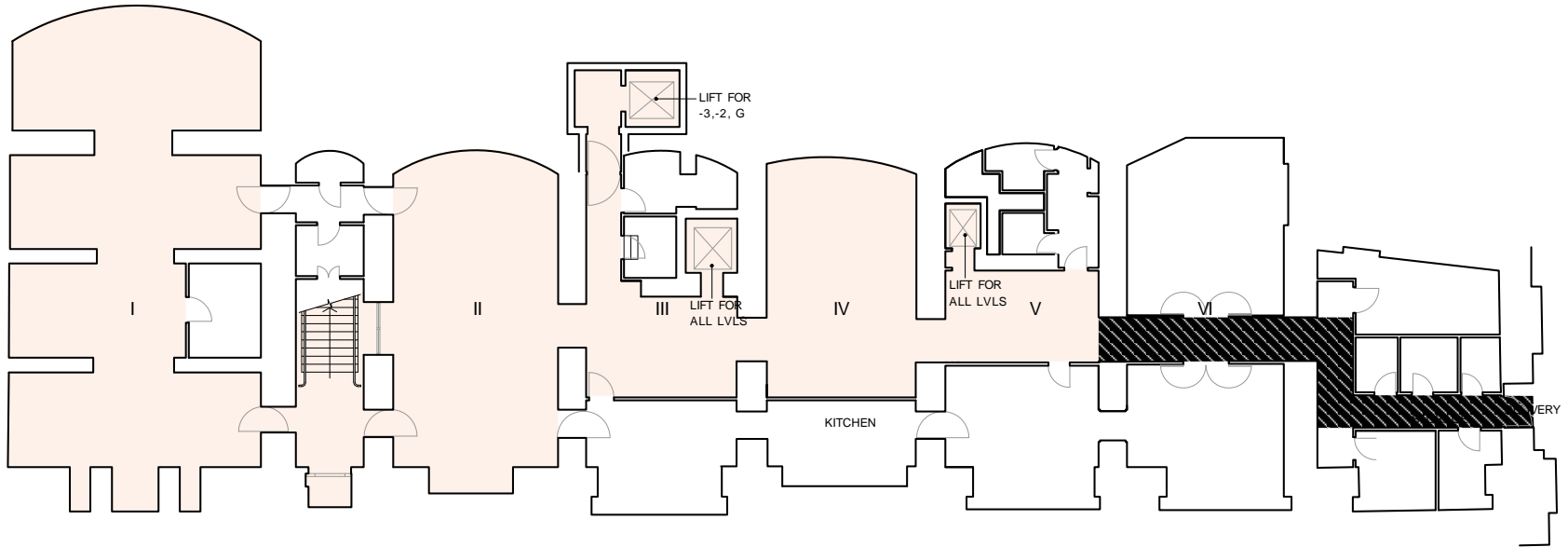
Resume of key principles of Concept Design

Level -3:

While Level -3 is outside of the brief area for the RSA Coffee House, it will be pertinent to consider the outcome of the mini-study undertaken by MHBC, to determine the feasibility of moving the kitchen into Vault IV, and opportunities at Level -3 for relocating some of the H&J storage currently at Levels 0, -1 and -2.

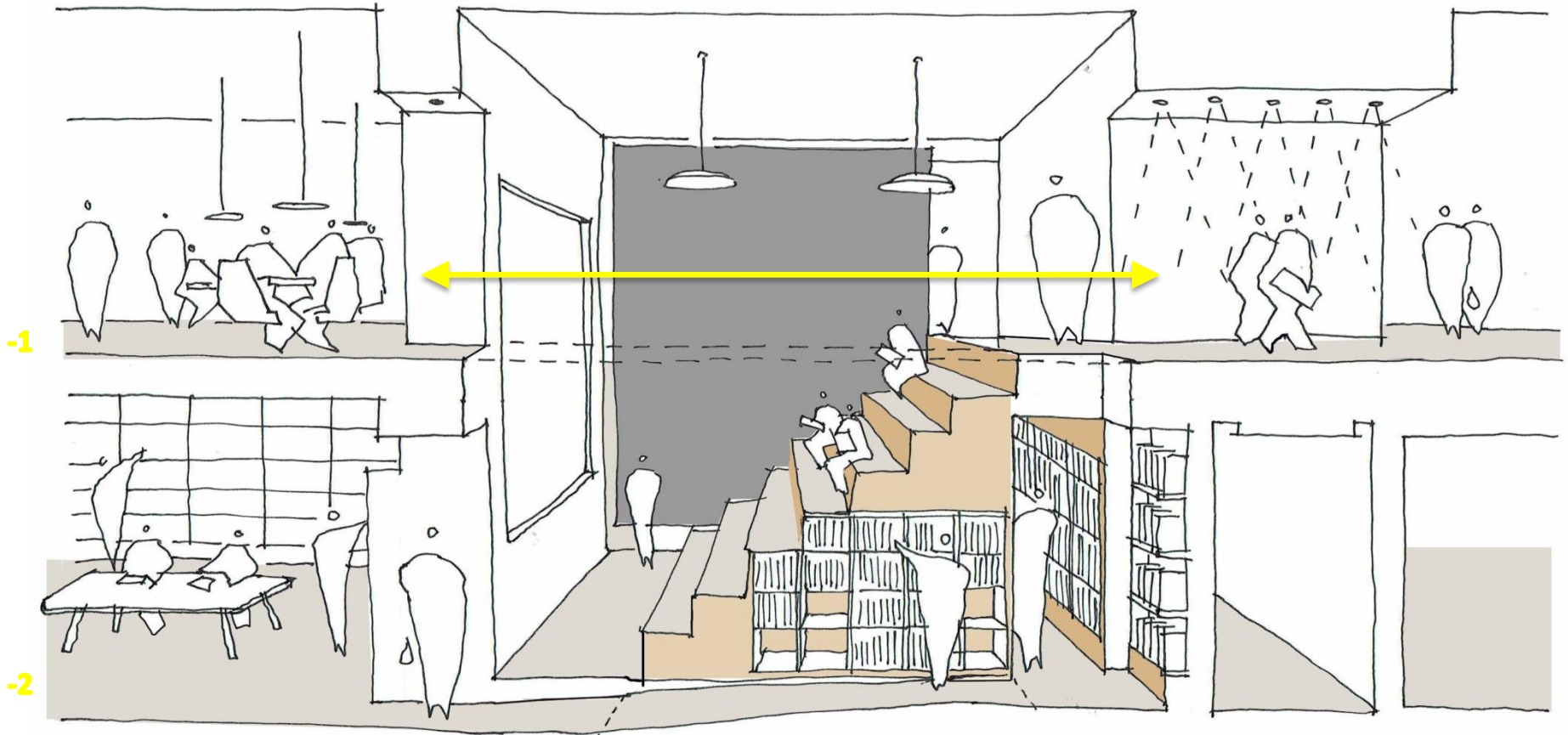
Level -3

- KITCHEN AND 'BACK OF HOUSE'
- ▨ ALTERNATIVE MEANS OF ESCAPE TO BE MAINTAINED

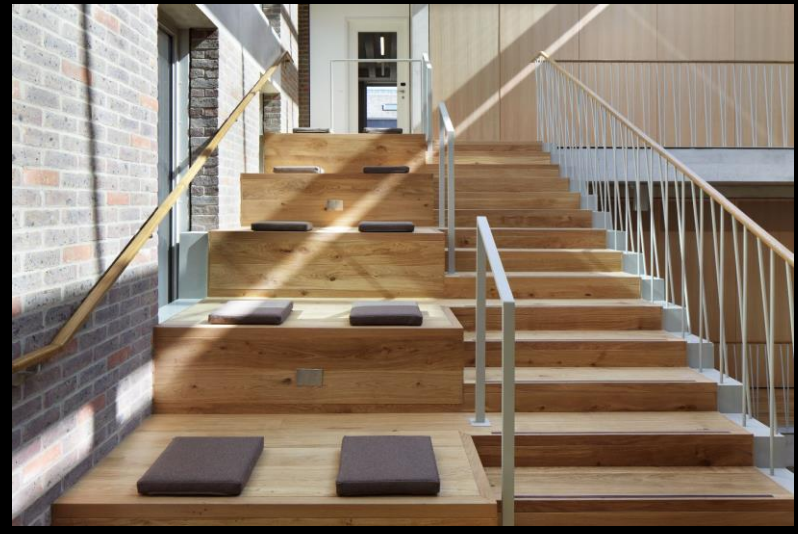


JOHN ADAM STREET

Cross Section through "Hellerup" Stair



Visual references of “Hellerup” Stair



Possible points of reference for all day dining

Bench tables versus individual tables



Bench tables in the Great Court of the British Museum encourage varied groupings, fuller occupancy of tables and interaction.



Individual tables as in the new Members' room at Tate Britain, can result in under occupancy of tables and lack of interaction.

Possible points of reference for 'blended space' evoking 'power to create'

1 – Creative Workspace?

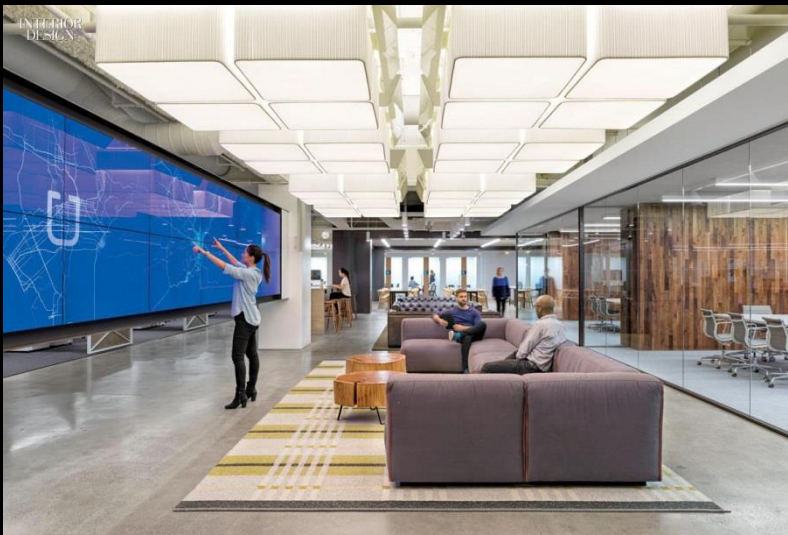


Lend lease, London



Possible points of reference for 'blended space' evoking 'power to create'

1 – Creative Workspace?



What form might collaborative space take to accommodate current and future patterns of work?

Possible points of reference for 'blended space' evoking 'power to create'

2 – Blended work/social spaces in Members' Clubs and Rooms



Shoreditch House, London



The House of Barnabus



British Museum Members' Room



British Museum Members' Room

Possible points of reference for 'blended space' evoking 'power to create'

2 – Blended work/social spaces in Members' Clubs and Rooms



Club House, London



Club House, London



Club House, London



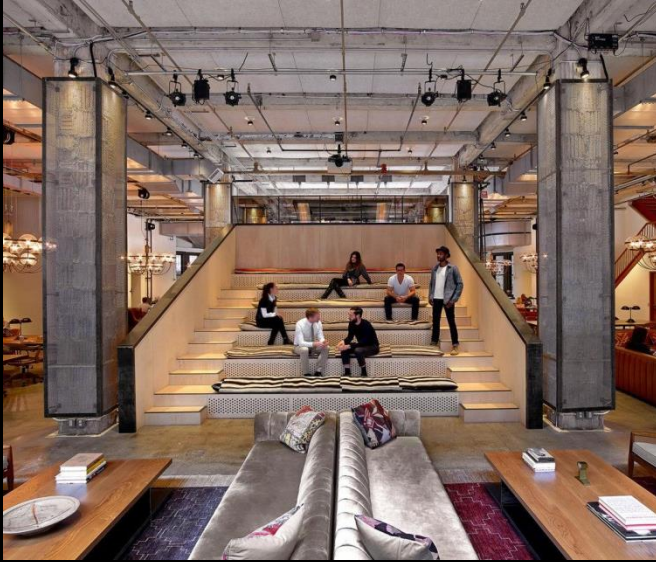
Shoreditch House, London



Shoreditch House, London

Possible points of reference for 'blended space' evoking 'power to create'

2 – Blended work/social spaces in Members' Clubs and Rooms



Neue House, New York



Neue House, New York



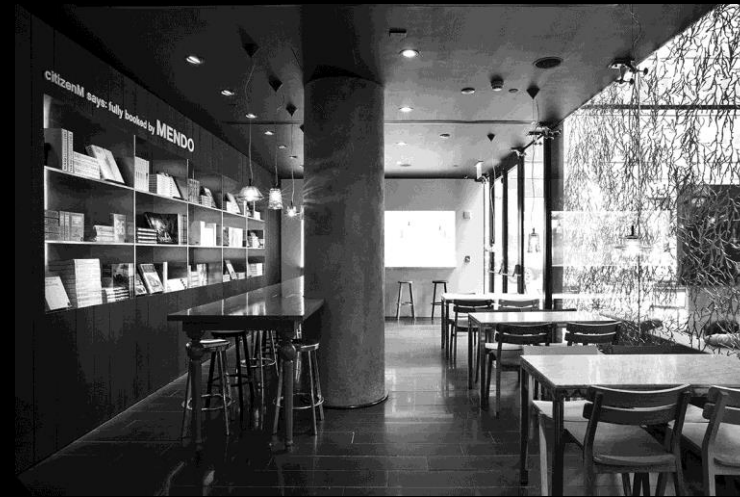
Neue House, Los Angeles



Neue House, Los Angeles

Possible points of reference for 'blended space' evoking 'power to create'

3 – Blended work/social spaces in a new wave of hotels such as Citizen M



Citizen M, New York, London, Paris, Rotterdam

Possible points of reference for 'blended space' evoking 'power to create'

3 – Blended work/social spaces in a new wave of hotels such as Citizen M



Ace Hotel, London

